

**South Shore  
Technical High School**  
Hanover, MA

Public Forum #2

November 9, 2023

---

 **LeftField**

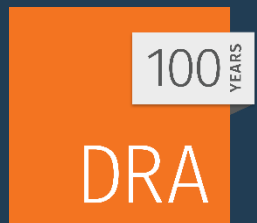
100  
YEARS

DRA



# TODAY'S AGENDA

1. Get to Know South Shore Tech
2. Team Introductions
3. The MSBA Process
4. Project Timeline / Project Milestones
5. Design Updates:
  - I. Existing Conditions
  - II. Site Options
6. More Community Feedback Opportunities
7. Questions & Answers



# GET TO KNOW SOUTH SHORE TECH

## The School



**Opened in 1962**, located at 476 Webster Street (Rte 123) in Hanover

**Serves communities of** Abington, Cohasset, Hanover, Hanson, Marshfield (as of 7.1.24), Norwell, Rockland, Scituate, Whitman

**Offers Chapter 74 Vocational Majors:** Allied Health, Automotive, Carpentry, Computer Information Technology, Cosmetology, Culinary Arts, Design Visual Communications, Electrical, Horticulture Landscape Construction, HVAC-R, Manufacturing Engineering Technology, Metal Fabrication/Welding

**Potential addition of Veterinary Science and Plumbing programs**

# GET TO KNOW SOUTH SHORE TECH

## Admissions Process



Each town is apportioned seats based on 8th grade population. 8th graders apply typically in the Fall. Admissions starts after the first marking period.

Admissions criteria include Grade 7 & 8 course grades, school attendance, discipline record, plus an interview.

Students not offered admission immediately are put on a waiting list and offered admission as seats open up through the winter and spring before grade 9 starts.

# GET TO KNOW SOUTH SHORE TECH

## Marshfield Cost Sharing for the School Project



*If project is approved by voters in early 2025, debt service will go into effect in FY26.*

Marshfield's share of a building project will phase in:

- FY25 budget year, first year of membership, no debt share
- FY26 thru FY29 budget years: Sliding scale based on annual enrollment
- FY30 budget year: Fixed share based on enrollment as of the 10.1.28 DESE report.

# TEAM INTRODUCTIONS

## SOUTH SHORE TECH



### South Shore Tech

- Superintendent Tom Hickey
- Sandra Baldner, Principal
- Keith Boyle, Assistant Principal / Director of Vocational Education
- Robert Mello, Vocational Coordinator, Dean of Students
- James Harding, Director of Building and Grounds

### School Committee

- Robert L Mahoney – Chair (Rockland)
- Thomas A Petruzzelli – Vice Chair (Abington)
- George Cooney (Cohasset)
- Robert P Heywood (Hanover)
- Francis Molla, Jr. (Hanson)
- Robert L Molla, Jr. (Norwell)
- John T Manning (Scituate)
- Daniel L Salvucci (Whitman)

### School Building Committee

- Thomas Hickey – Superintendent
- Sandra Baldner – Principal
- Keith Boyle – Vocational Director
- James Coughlin – Treasurer, School Committee Secretary
- James Harding – Director of Building and Grounds
- Robert Mello – Vocational Coordinator, Dean of Students
- Robert L Mahoney
- Thomas A Petruzzelli
- George Cooney
- Robert P Heywood
- Francis Molla, Jr.
- John T Manning
- Daniel L Salvucci

# TEAM INTRODUCTIONS

## LEFTFIELD



Jim Rogers  
Principal in Charge



Jen Carlson  
Project Director



Linda Liporto  
Sr. Project Manager



Adele Sands  
Education Liaison



Bernie Melone  
Site Representative



Carlos Montanez  
MEP Specialist



Lynn Stapleton  
Project Advisor



Sally Rogers  
ProPay Administrator

# TEAM INTRODUCTIONS

## DRA ARCHITECTS



**Carl R. Franceschi**  
AIA, LEED AP BD+C, MCPPO  
Principal in Charge



**Judd Christopher**  
MCPPO, Project Manager

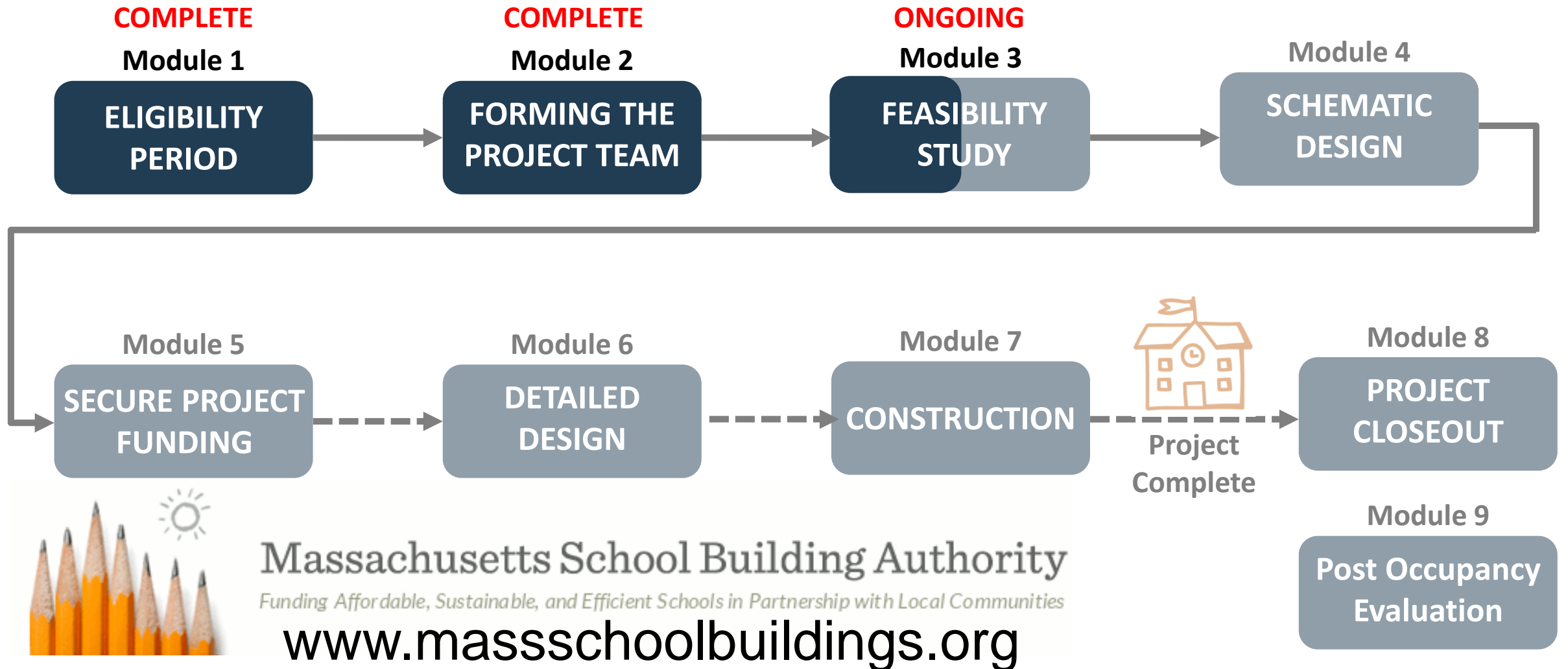


**Sarah Carda**  
AIA, Project Architect



# PROJECT TIMELINE

## MSBA Process



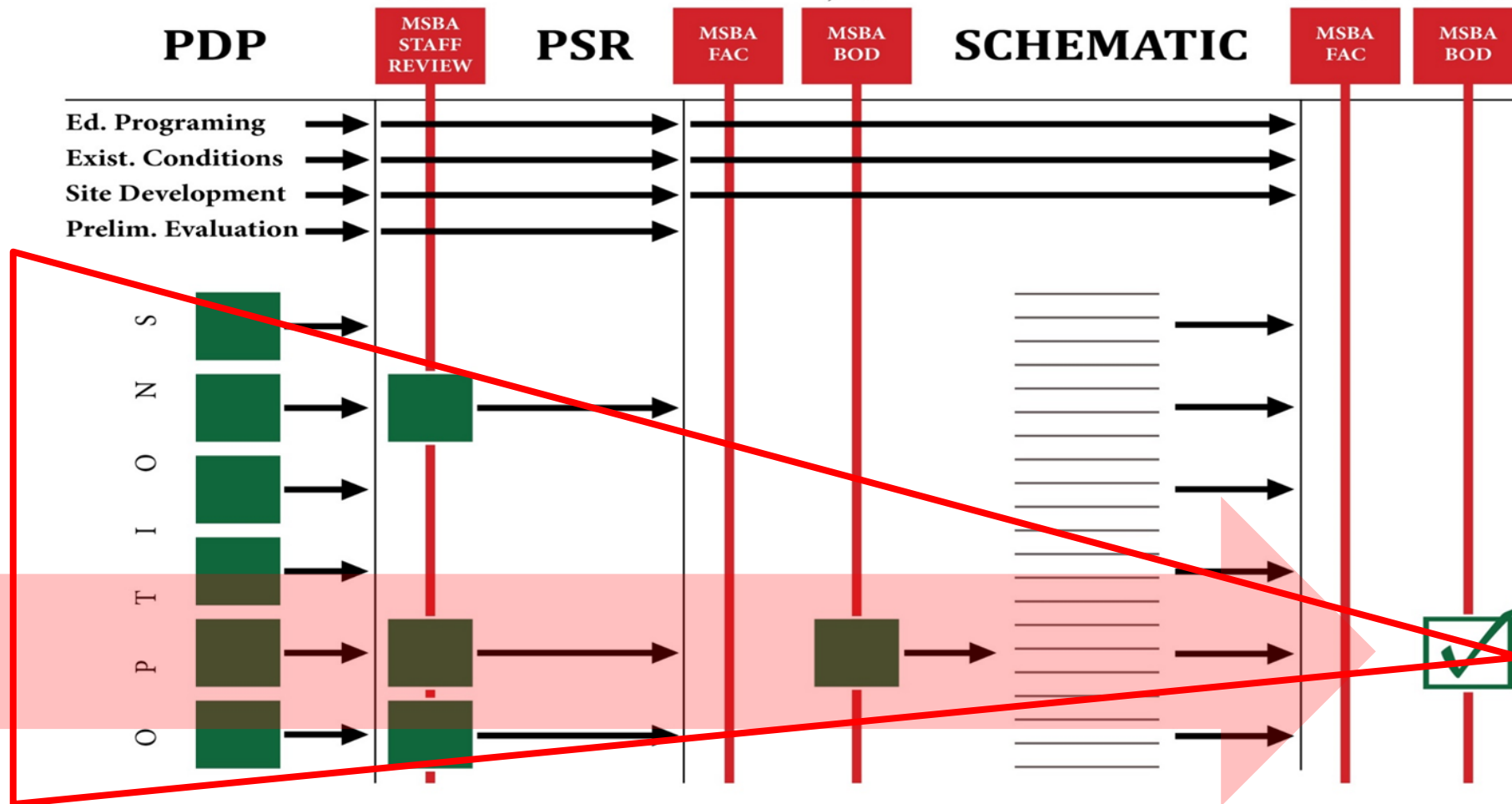
Massachusetts School Building Authority

*Funding Affordable, Sustainable, and Efficient Schools in Partnership with Local Communities*

[www.massschoolbuildings.org](http://www.massschoolbuildings.org)

# PROJECT TIMELINE

## MSBA Process



PDP = Preliminary Design Program  
 PSR = Preferred Schematic Report

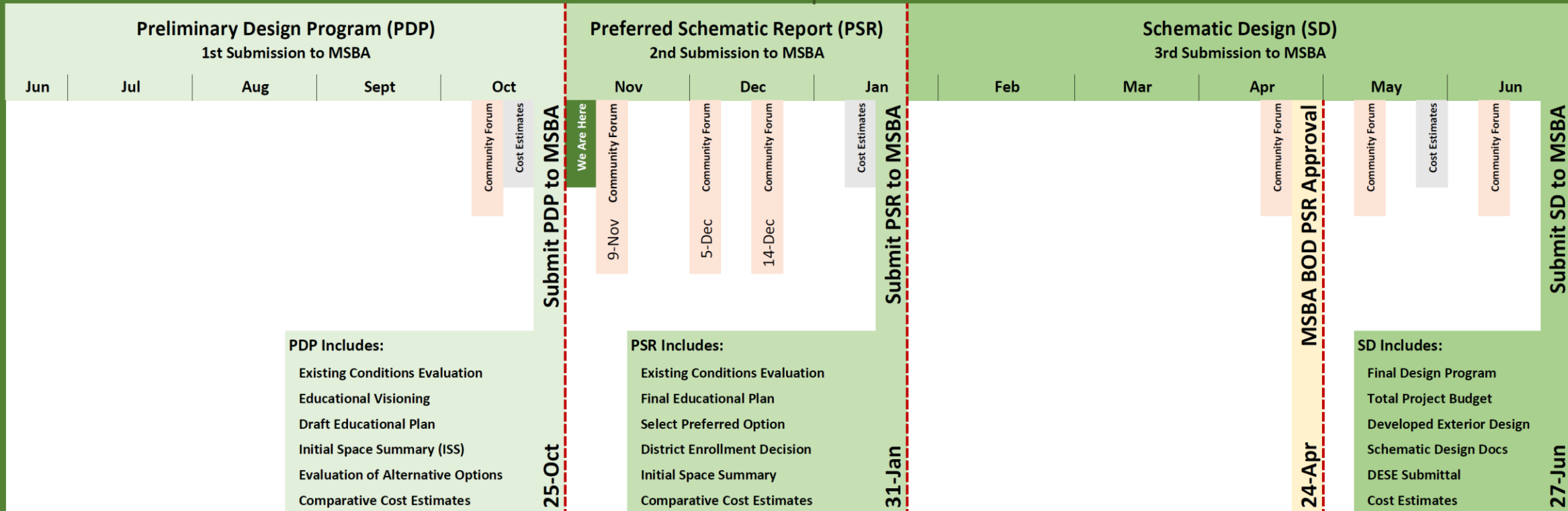


# PROJECT TIMELINE Milestones

## Feasibility Study / Schematic Design Work Phase

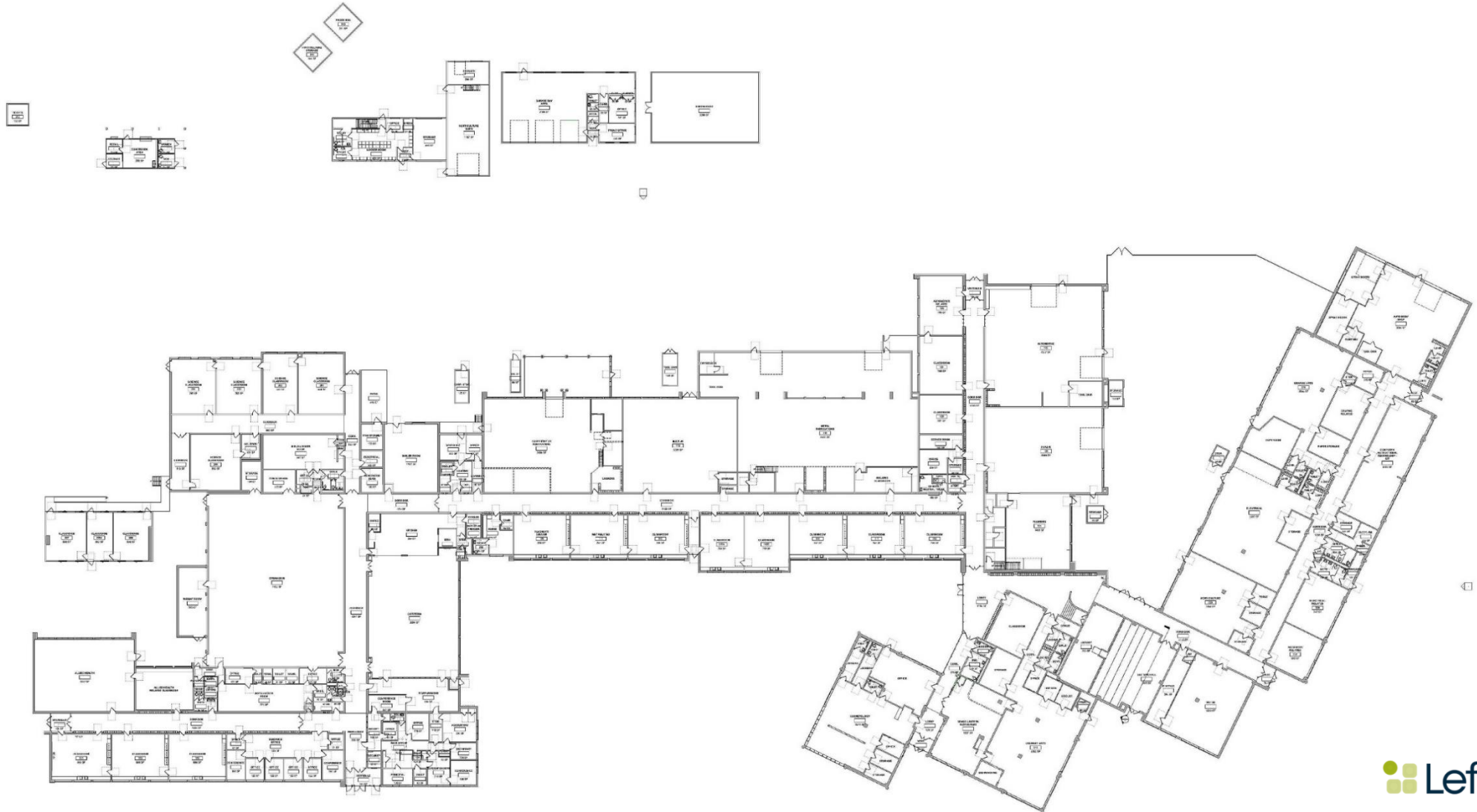
2023

2024



# EXISTING CONDITIONS

## Building Layout



# EXISTING CONDITIONS

## Classroom Size Guidelines



# EXISTING CONDITIONS

## Building Deficiencies



# EXISTING CONDITIONS

## Site Restrictions



# CONCEPTUAL DESIGN OPTIONS

## Process

Option	645 students	750 students	805 students	900 students	975 students
Addition/ Renovation AR- 1 “L-shape”	201,500 sf	217,500 sf	230,400 sf	243,200 sf	254,500 sf
Addition/ Renovation AR- 2 “Lightwell”	188,100 sf	201,700 sf	209,600 sf	228,500 sf	236,100 sf
New Construction NC-1 “Courtyard”	203,480 sf	228,540 sf	240,000 sf	260,000 sf	278,000 sf
New Construction NC-2 “Linear”	203,480 sf	228,540 sf	240,000 sf	260,000 sf	278,000 sf
New Construction NC-3 “Wings”	203,480 sf	228,540 sf	240,000 sf	260,000 sf	278,000 sf



# CONCEPTUAL DESIGN OPTIONS

## Status



Option	645 students	750 students	805 students	900 students	975 students
Addition/ Renovation <b>AR- 1 “L-shape”</b>	201,500 sf \$303.7m	217,500 sf \$332.4m	230,400 sf \$349.8m	243,200 sf \$366.8m	254,500 sf \$391.1m
Addition/ Renovation <b>AR- 2 “Lightwell”</b>	188,100 sf \$277.9m	201,700 sf \$303.5m	209,600 sf \$314.2m	228,500 sf \$338.9m	236,100 sf \$349.3m
New Construction <b>NC-1 “Courtyard”</b>					
New Construction <b>NC-2 “Linear”</b>	203,480 sf \$293.7m	228,540 sf \$329.9m	240,000 sf \$344.1m	260,000 sf \$367.9m	278,000 sf \$389.4m
New Construction <b>NC-3 “Wings”</b>					

The estimated construction and total project cost provided are for COMPARISON PURPOSES ONLY and are based on design narratives and general square footage. The estimated costs will be updated at the Preliminary Schematic Report (PSR) phase to assist the committee in defining the single preferred solution to proceed into the Schematic Design (SD) phase. The actual costs and total project budget will be established at the end of the Schematic Design (SD) phase for the district’s preferred solution.

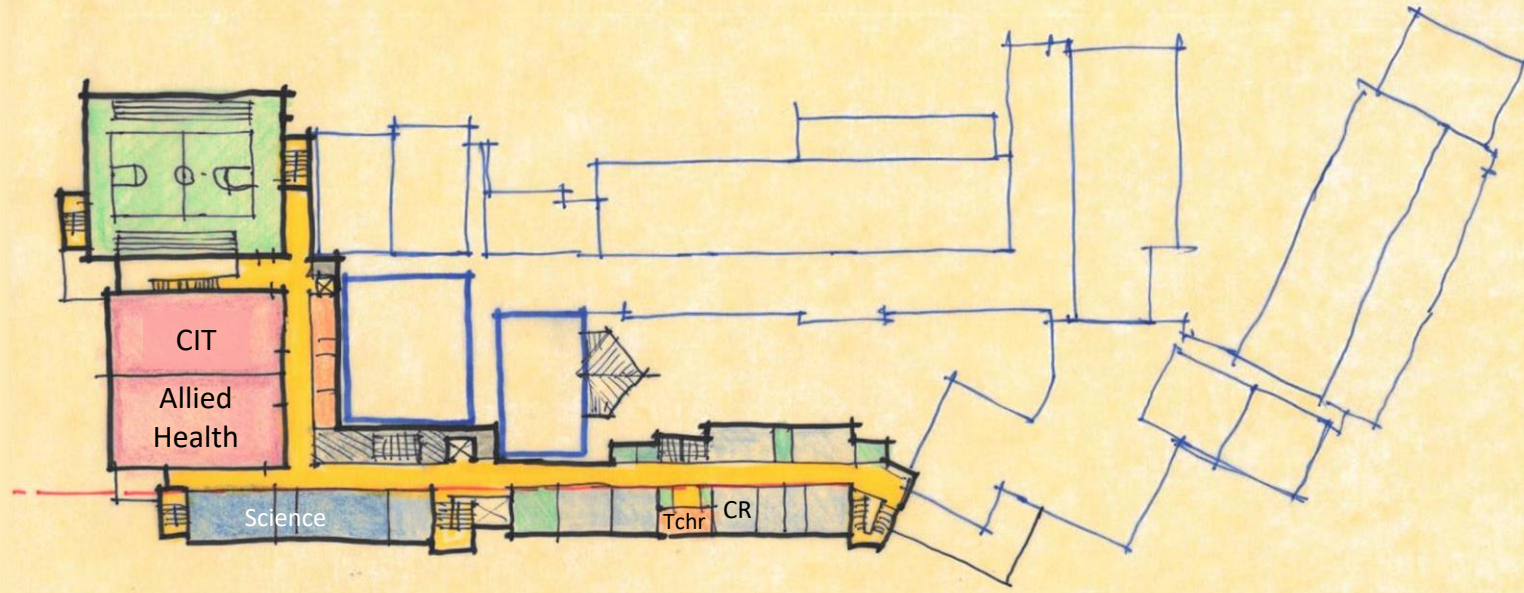
# CONCEPTUAL DESIGN OPTIONS

## Addition / Renovation Options

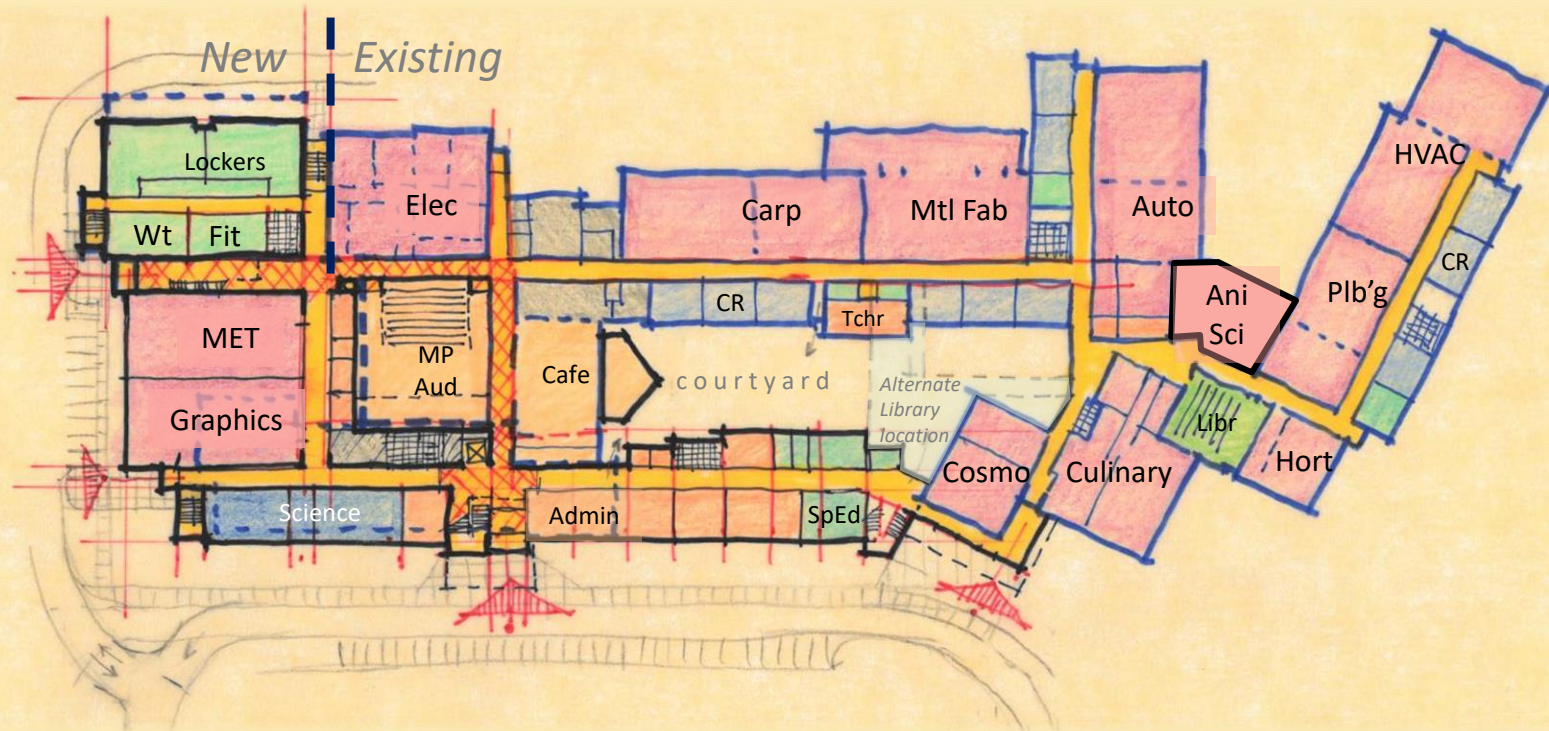
1. AR-1 L-Shaped
2. AR-2 Courtyard



# AR-1 L-Shaped



2<sup>nd</sup> Floor



1<sup>st</sup> Floor

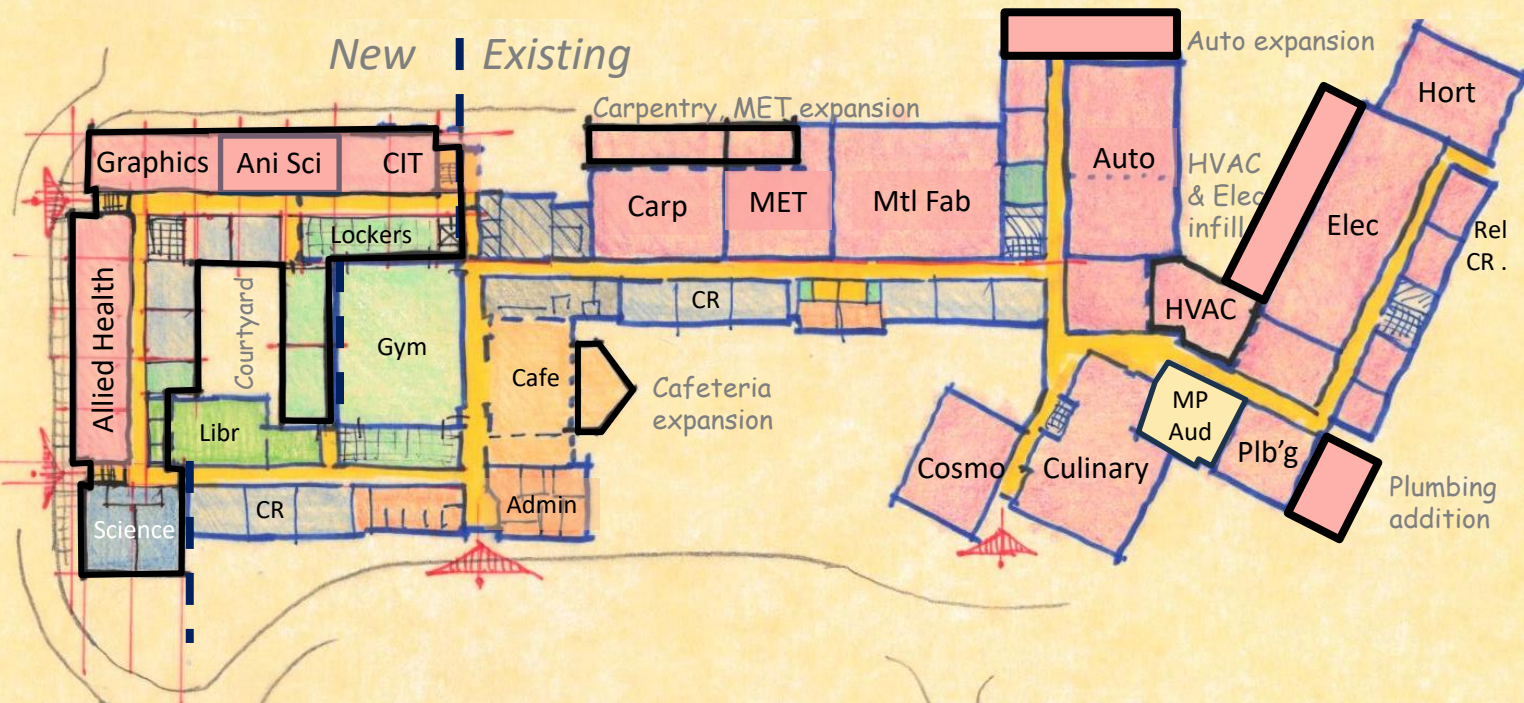
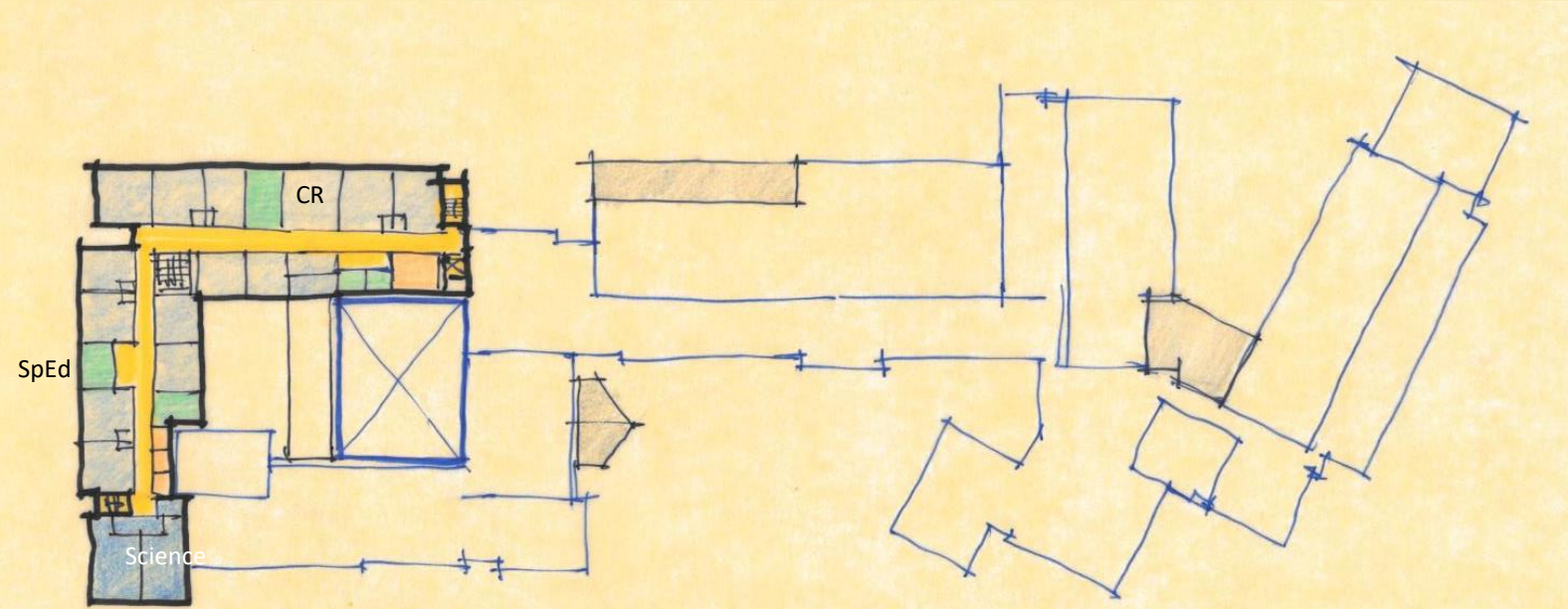
AR-1  
L-Shaped



# AR-2

## Lightwell

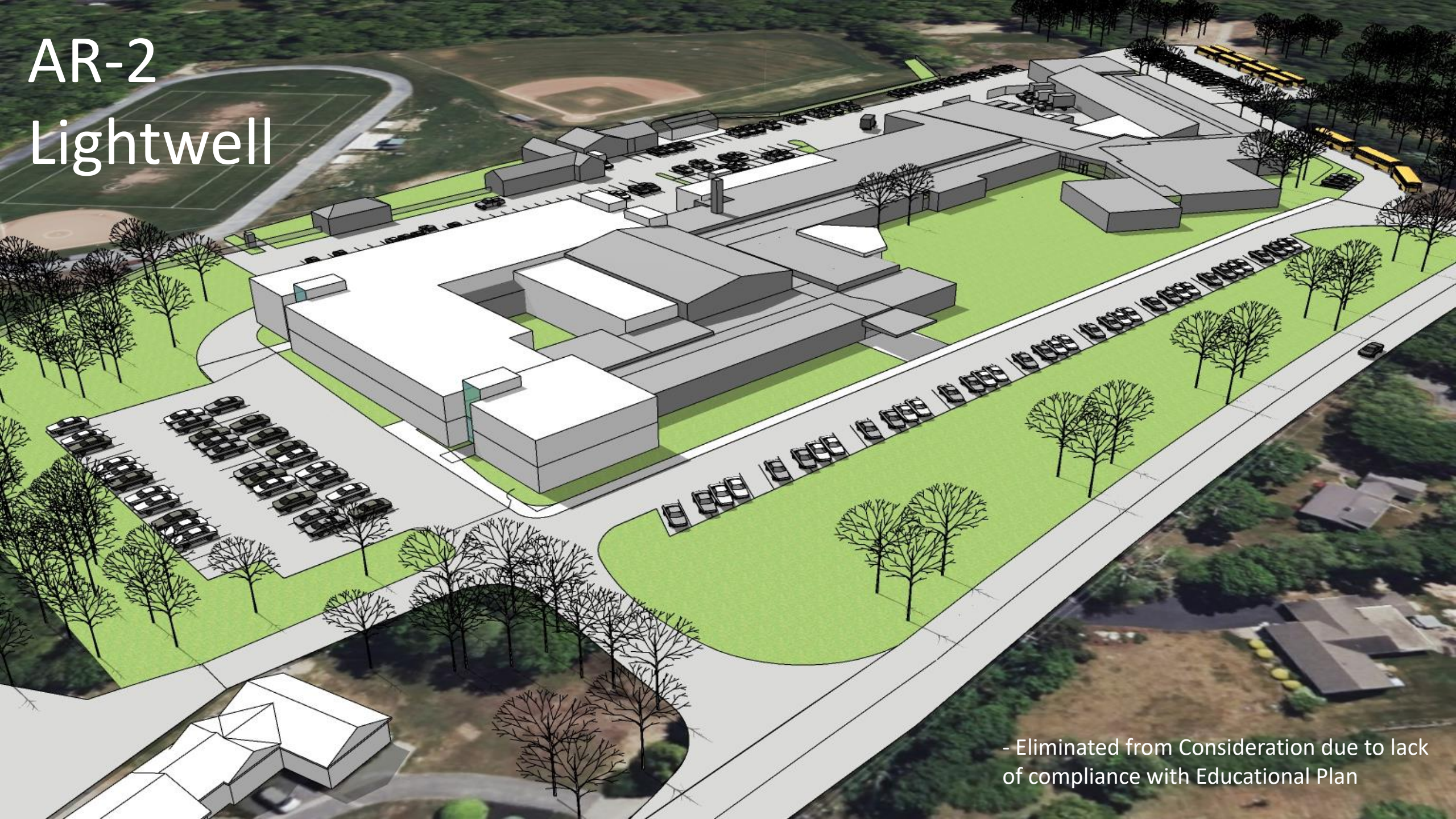
- Eliminated from Consideration due to lack of compliance with Educational Plan



2<sup>nd</sup> Floor

1<sup>st</sup> Floor

# AR-2 Lightwell



- Eliminated from Consideration due to lack of compliance with Educational Plan

# CONCEPTUAL DESIGN OPTIONS

## New Construction Options

1. NC-1 Courtyard
2. NC-2 Linear
3. NC-3 Wings



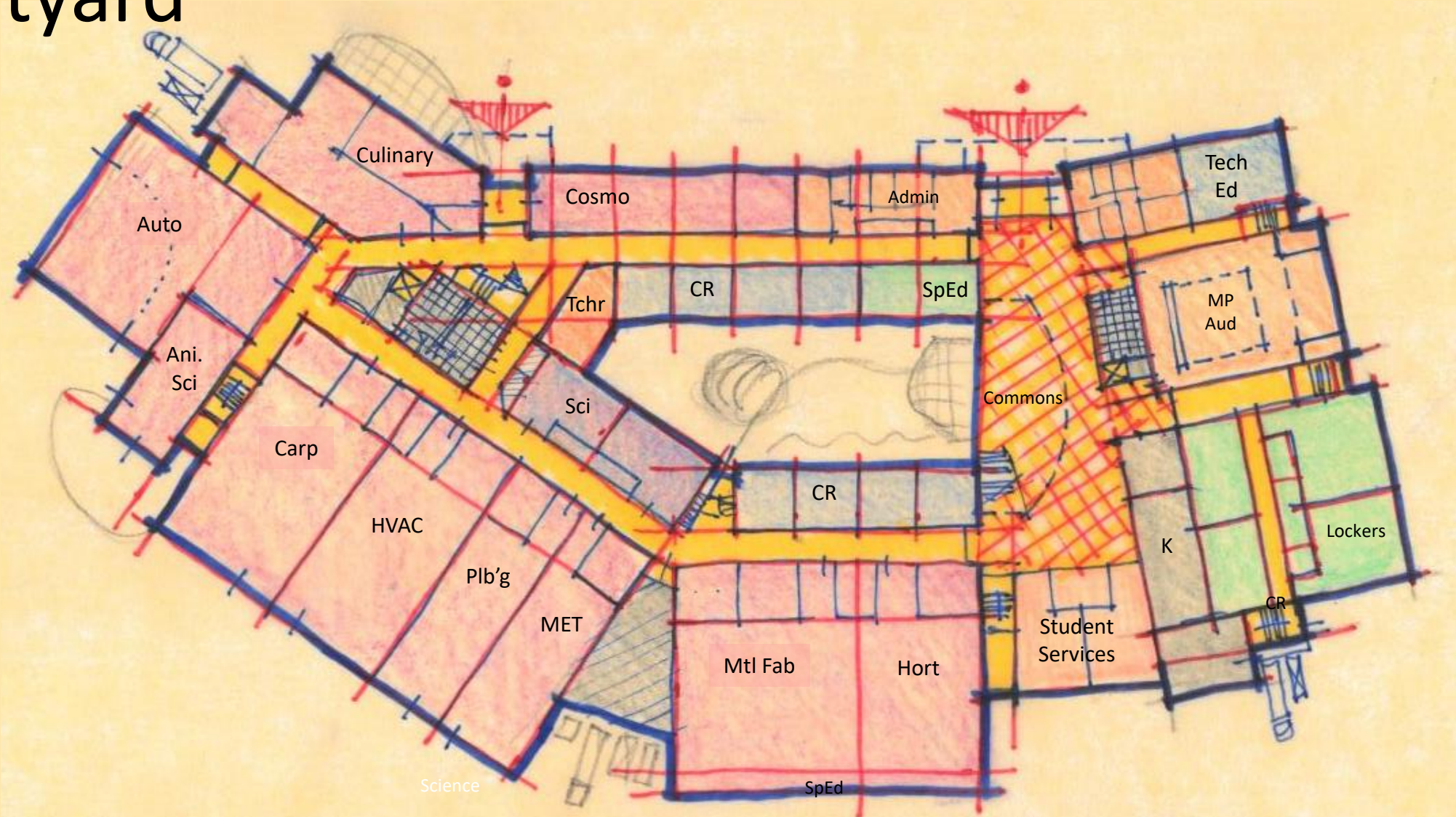
# NC-1 Courtyard



Site Plan

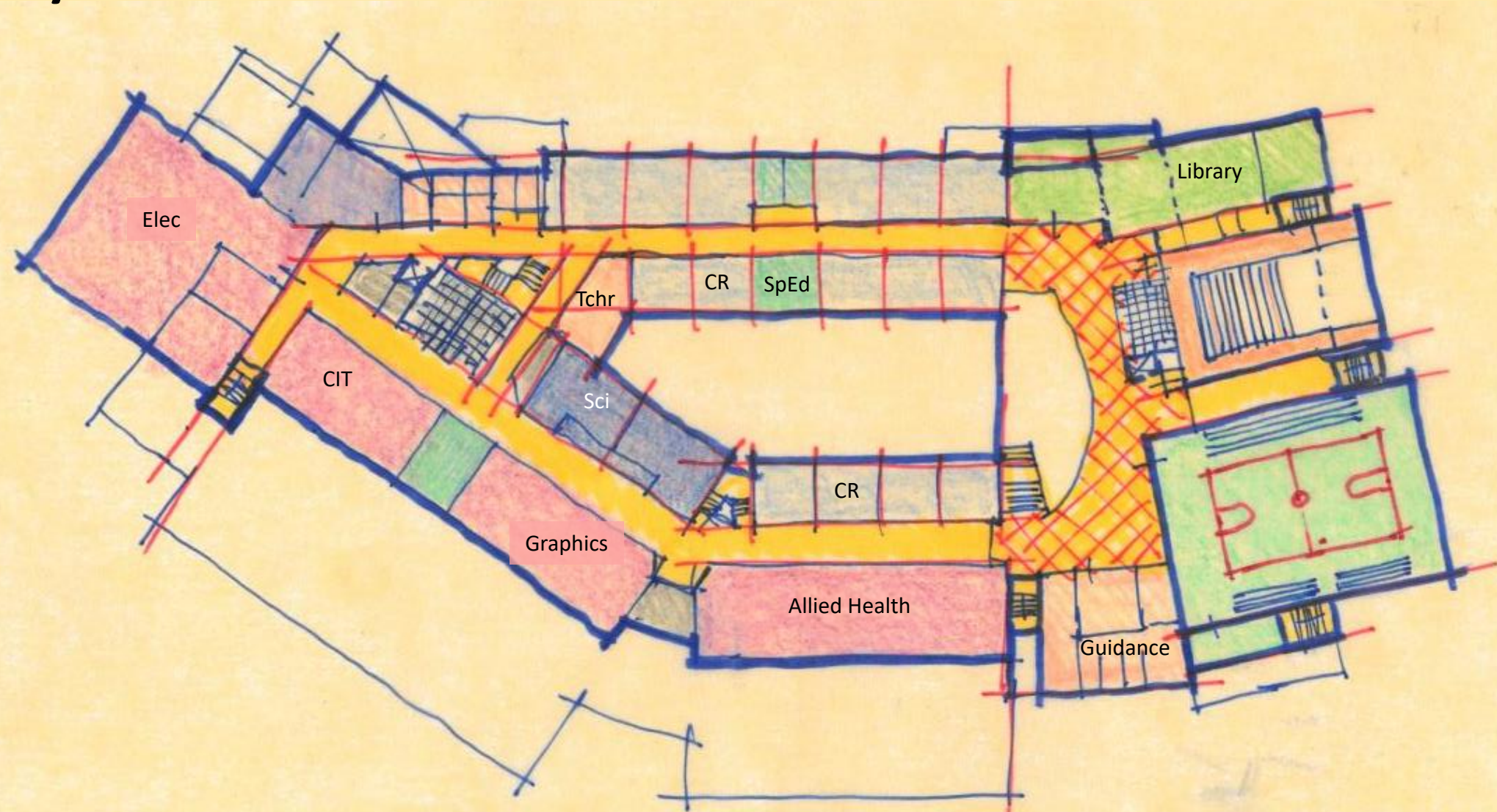


# NC-1 Courtyard



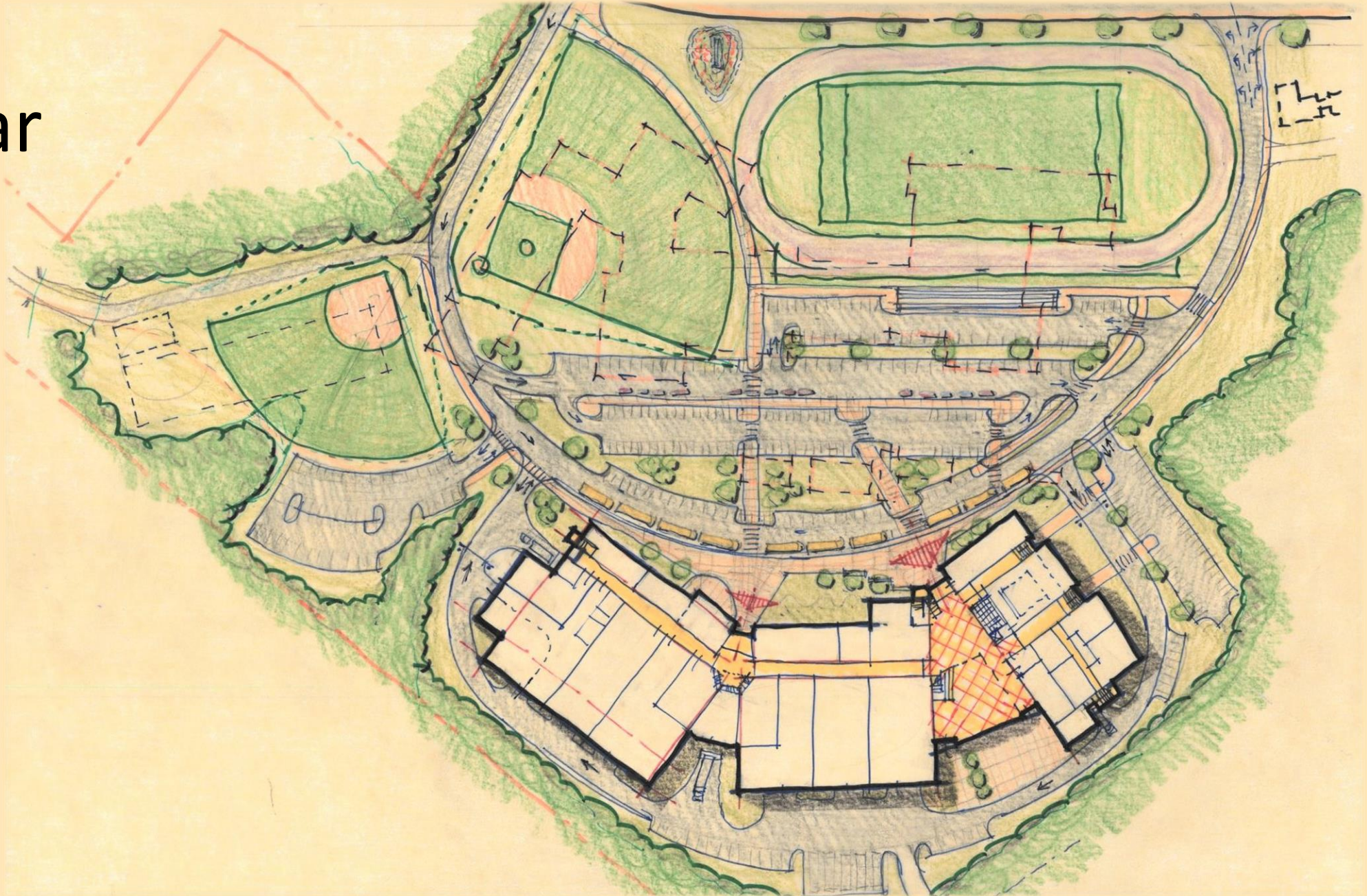
1<sup>st</sup> Floor

# NC-1 Courtyard



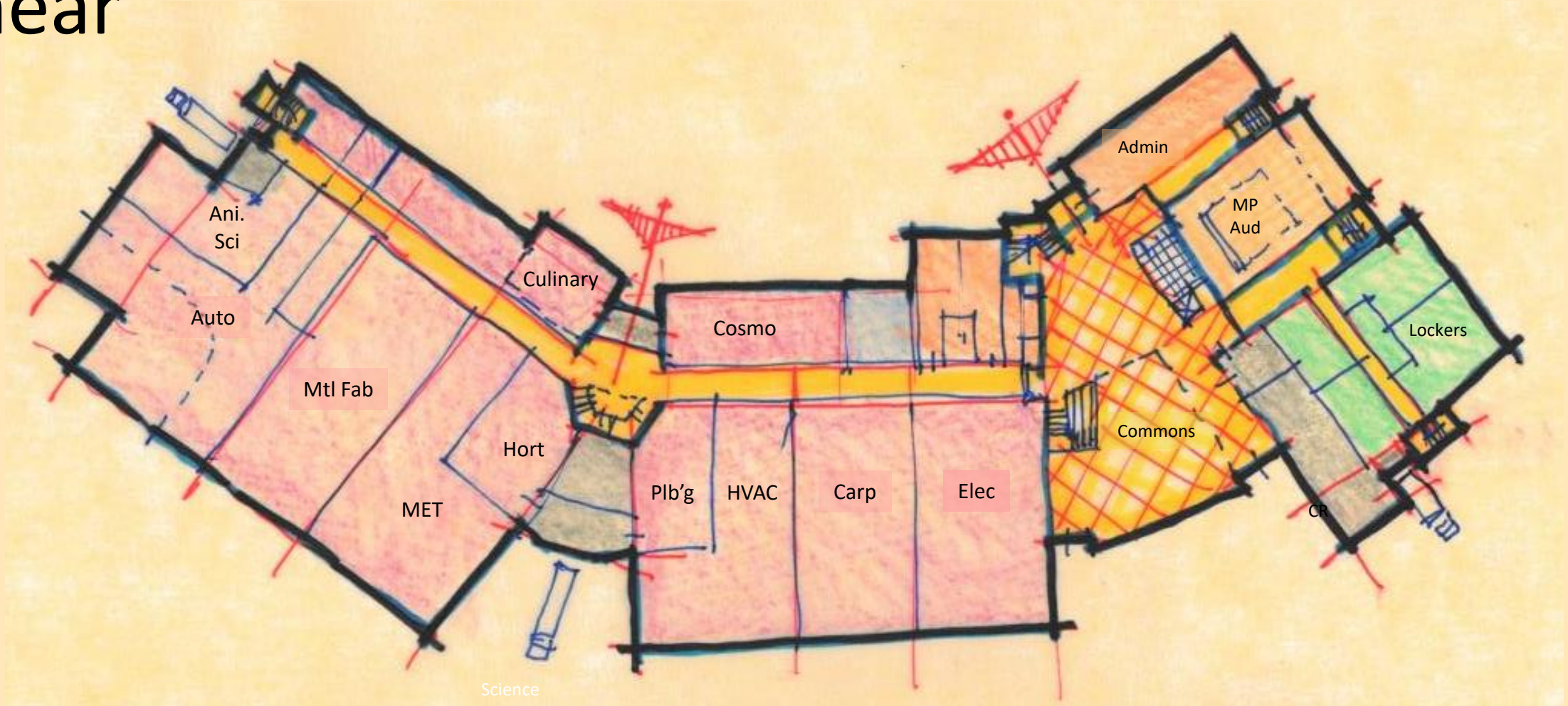
2<sup>nd</sup> Floor

# NC-2 Linear



Site Plan

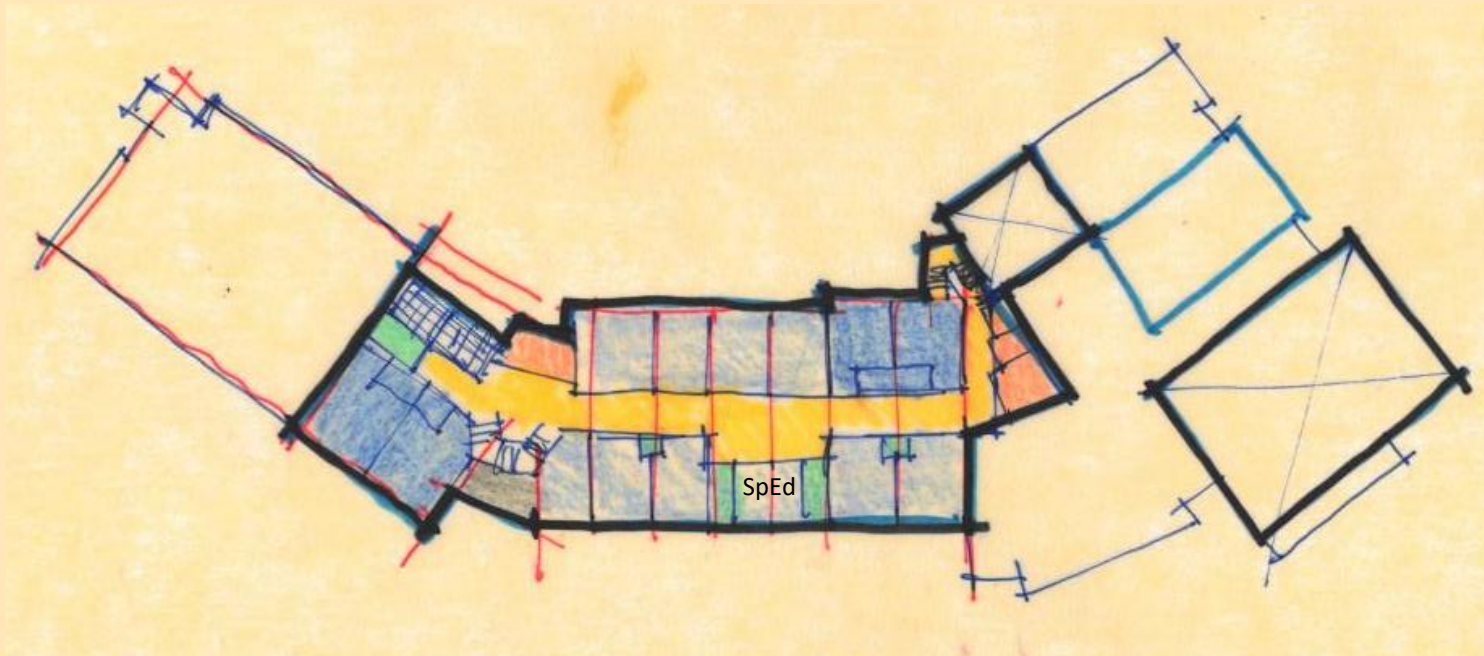
# NC-2 Linear



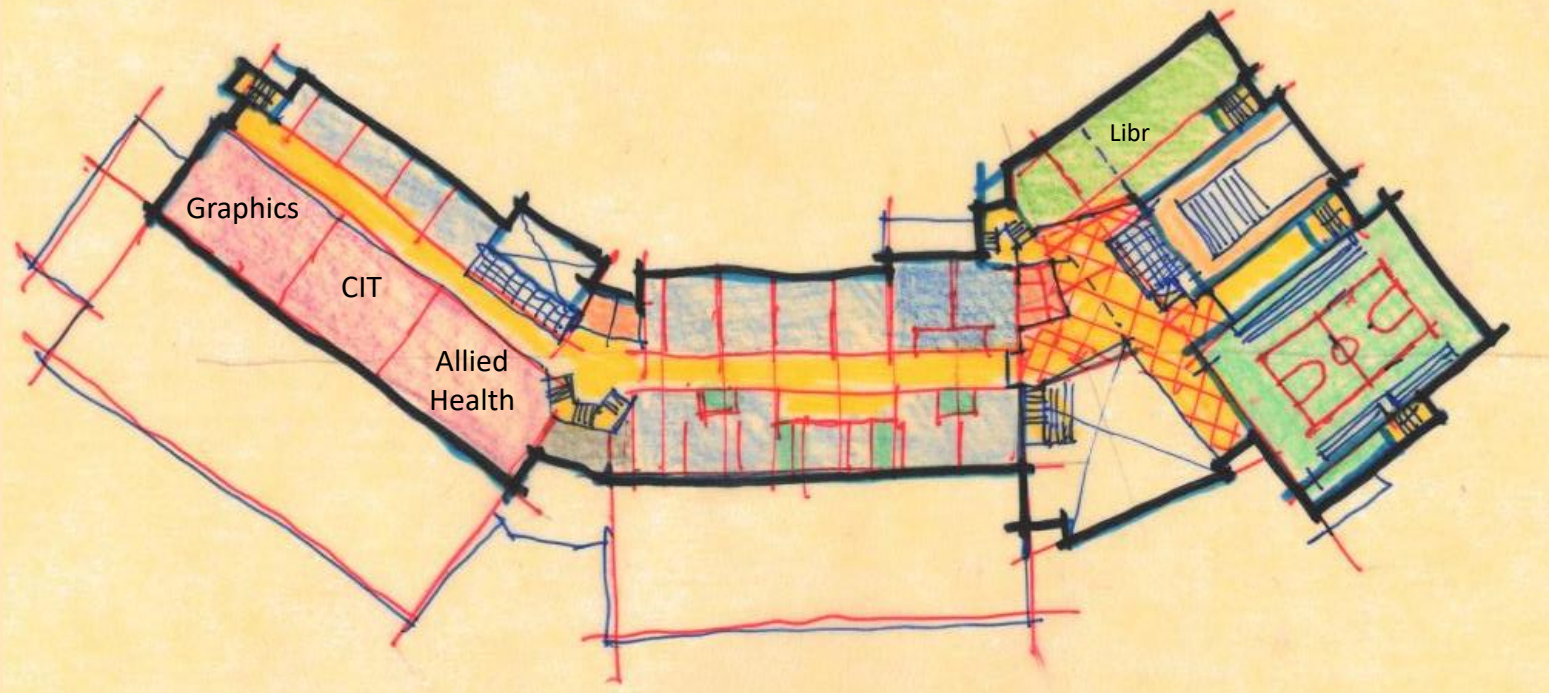
1<sup>st</sup> Floor

# NC-2 Linear

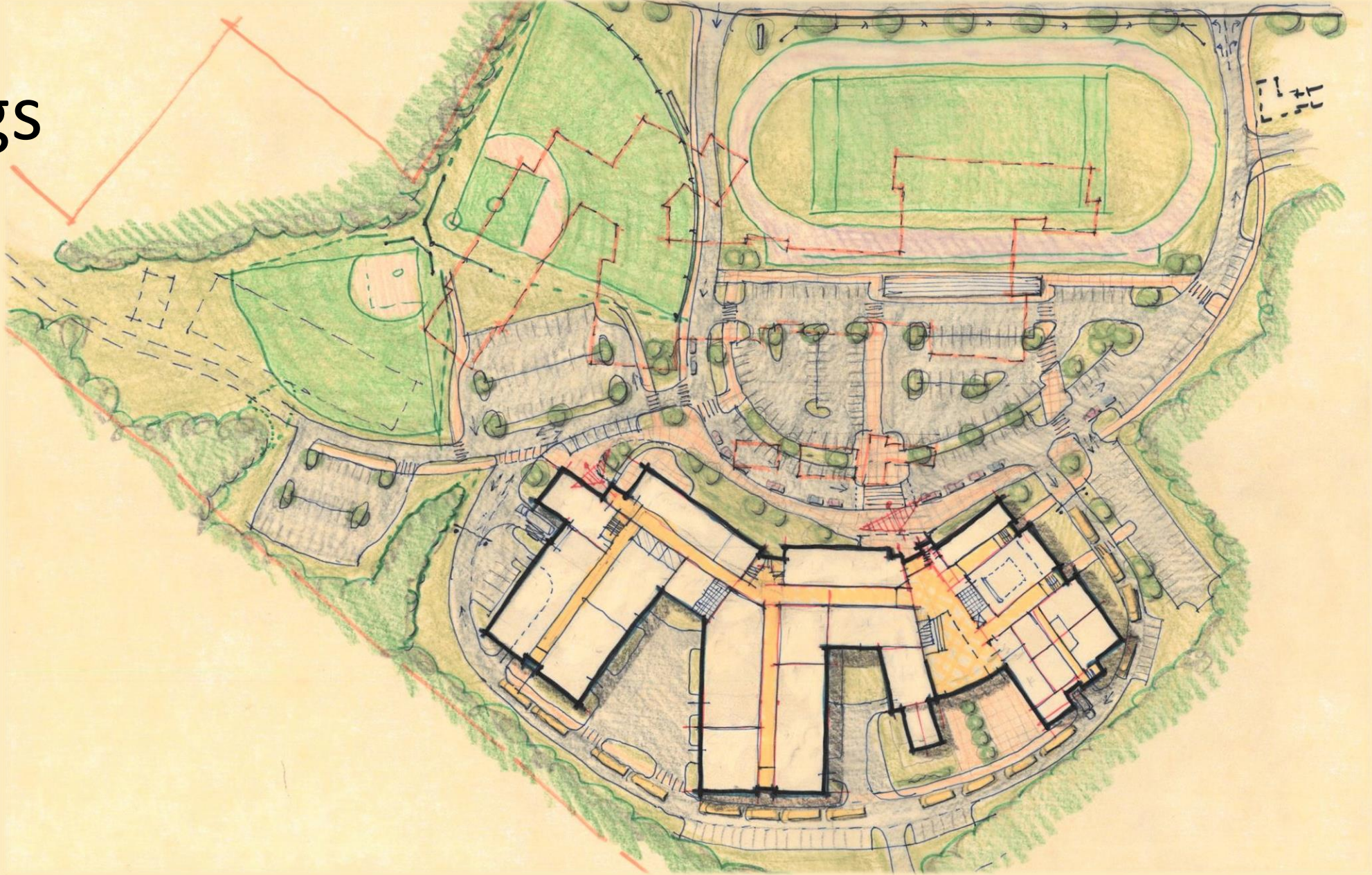
3<sup>rd</sup> Floor



2<sup>nd</sup> Floor

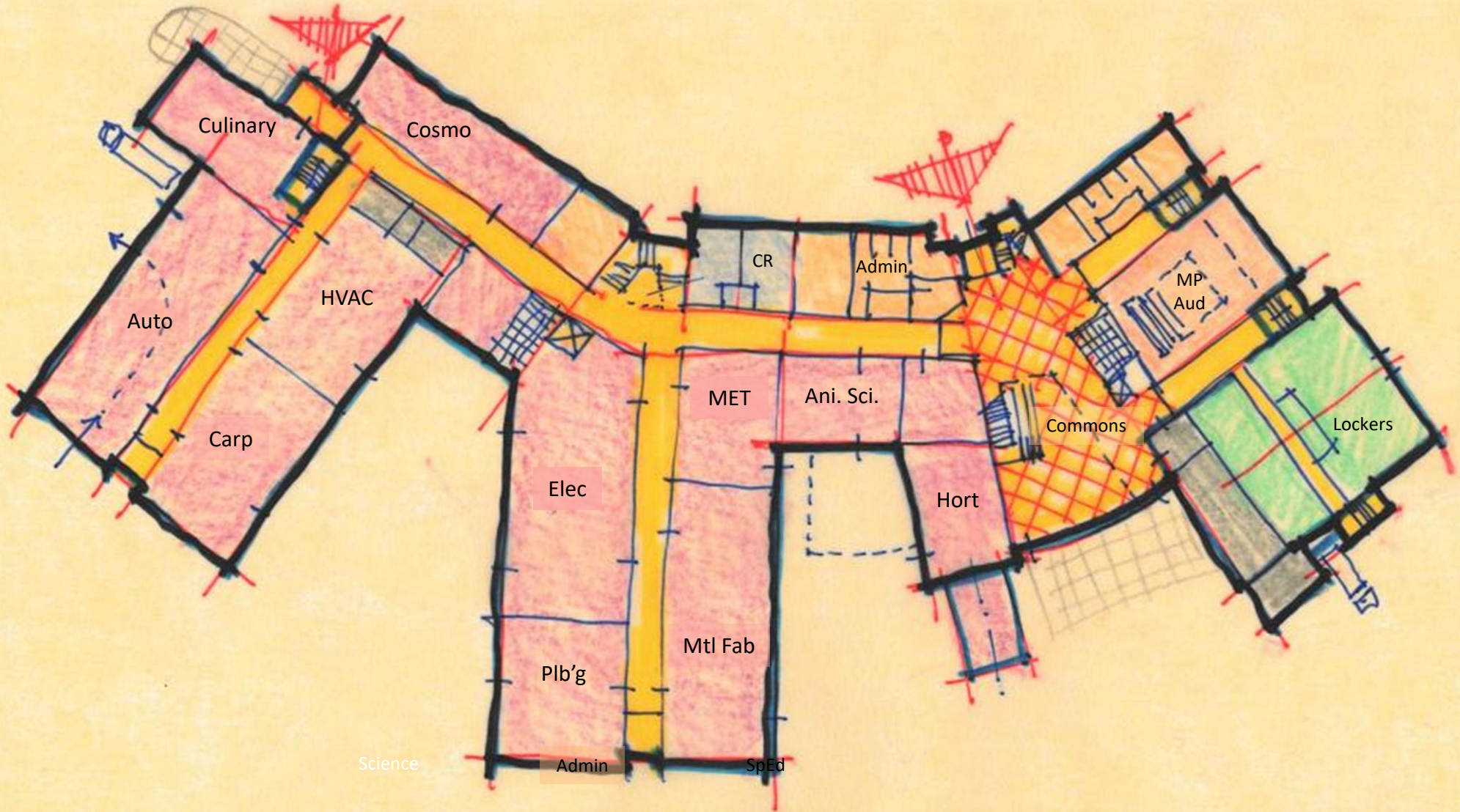


# NC-3 Wings



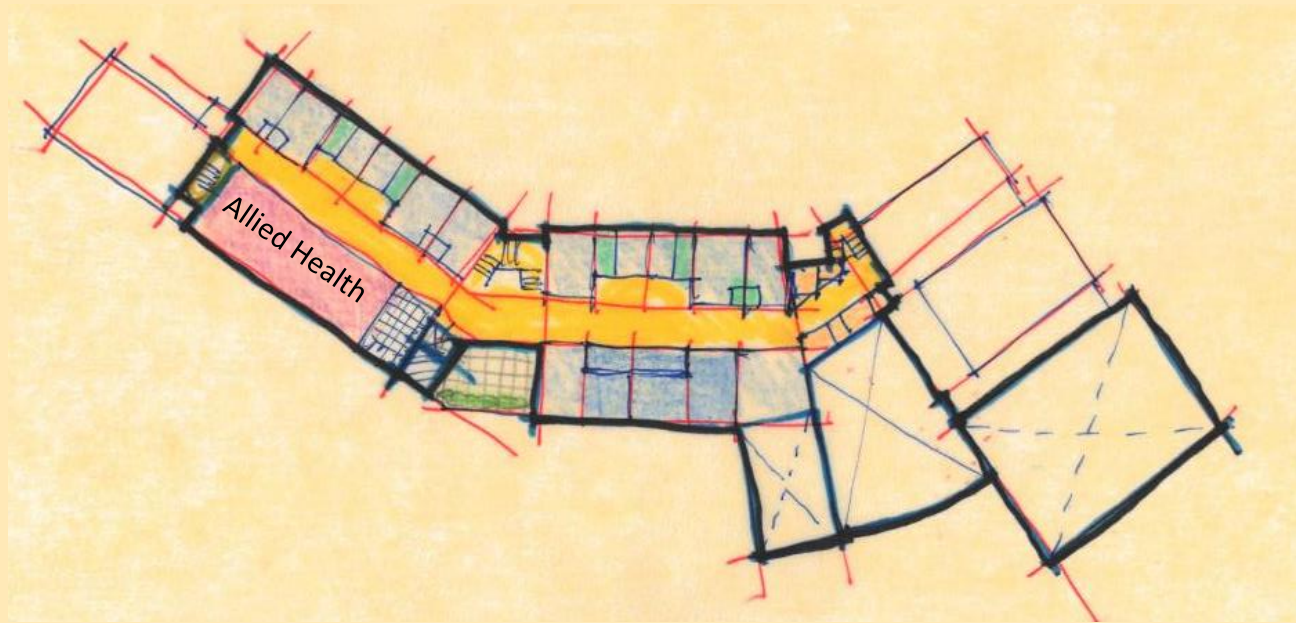
Site Plan

# NC-3 Wings

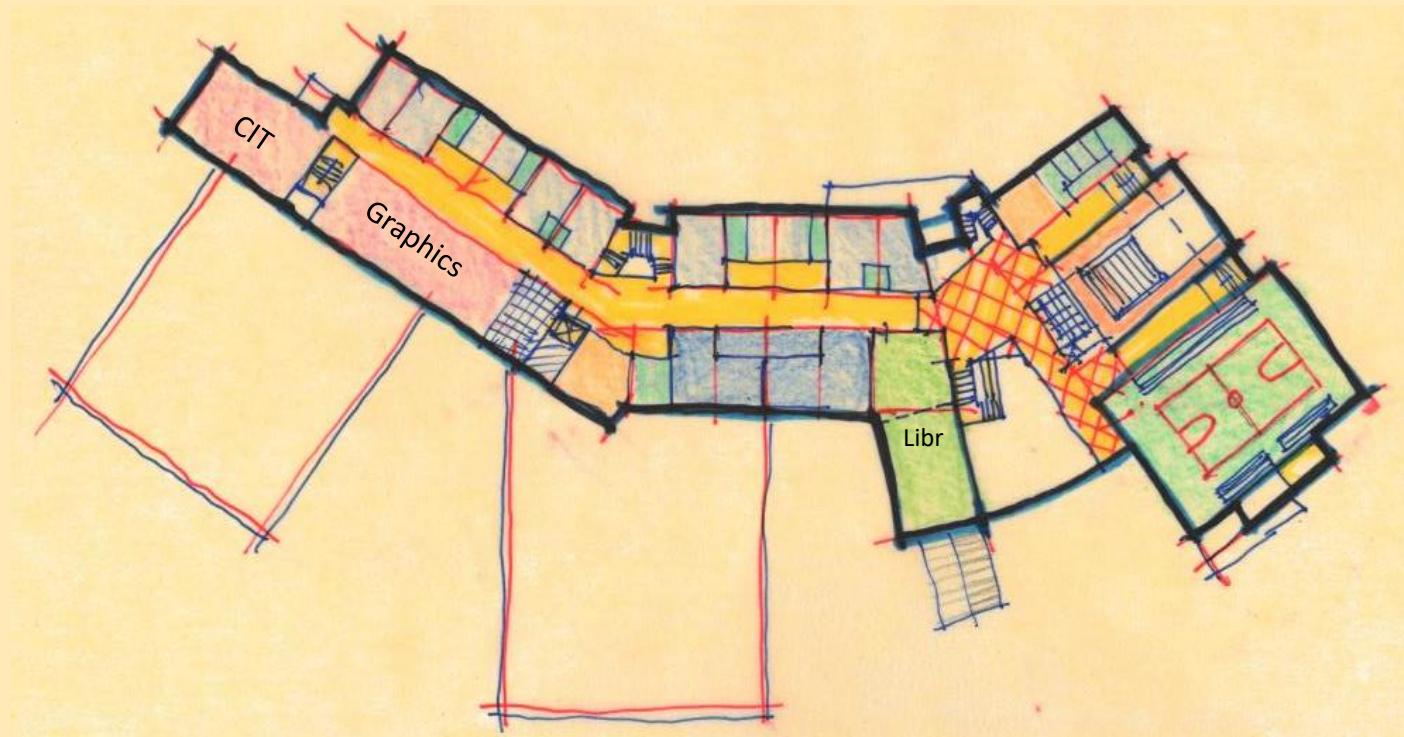


1<sup>st</sup> Floor

# NC-3 Wings



3<sup>rd</sup> Floor



2<sup>nd</sup> Floor





## Upcoming Community Forums

- December 5  
@ Rockland Senior Center
- Thursday December 14  
@ Whitman Town Hall



# Questions?

Check out our website  
for updates!

<https://southshorettechproject.com/>