

South Shore Technical High School

Hanover, MA

Public Forum #1

October 5, 2023

 LeftField

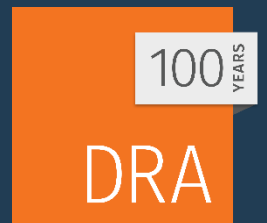
100
YEARS

DRA



TODAY'S AGENDA

1. Team Introductions
2. The MSBA Process
3. Project Timeline / Project Milestones
4. Design Team Updates:
 - I. Existing Building and Site Conditions Analysis
 - II. Educational Visioning
 - III. Site Options
5. More Community Feedback Opportunities
6. Questions & Answers



TEAM INTRODUCTIONS

SOUTH SHORE TECH



South Shore Tech

- Superintendent Tom Hickey
- Sandra Baldner, Principal
- Keith Boyle, Assistant Principal / Director of Vocational Education
- Robert Mello, Vocational Coordinator, Dean of Students
- James Harding, Director of Building and Grounds

School Committee

- Robert L Mahoney – Chair (Rockland)
- Thomas A Petruzzelli – Vice Chair (Abington)
- George Cooney (Cohasset)
- Robert P Heywood (Hanover)
- Francis Molla, Jr. (Hanson)
- Robert L Molla, Jr. (Norwell)
- John T Manning (Scituate)
- Daniel L Salvucci (Whitman)

School Building Committee

- Thomas Hickey – Superintendent
- Sandra Baldner – Principal
- Keith Boyle – Vocational Director
- James Coughlin – Treasurer, School Committee Secretary
- James Harding – Director of Building and Grounds
- Robert Mello – Vocational Coordinator, Dean of Students
- Robert L Mahoney
- Thomas A Petruzzelli
- George Cooney
- Robert P Heywood
- Francis Molla, Jr.
- John T Manning
- Daniel L Salvucci

TEAM INTRODUCTIONS

LEFTFIELD



Jim Rogers
Principal in Charge



Jen Carlson
Project Director



Linda Liporto
Sr. Project Manager



Adele Sands
Education Liaison



Bernie Melone
Site Representative



Carlos Montanez
MEP Specialist



Lynn Stapleton
Project Advisor



Sally Rogers
ProPay Administrator

TEAM INTRODUCTIONS

DRA ARCHITECTS



Carl R. Franceschi
AIA, LEED AP BD+C, MCPPO
Principal in Charge



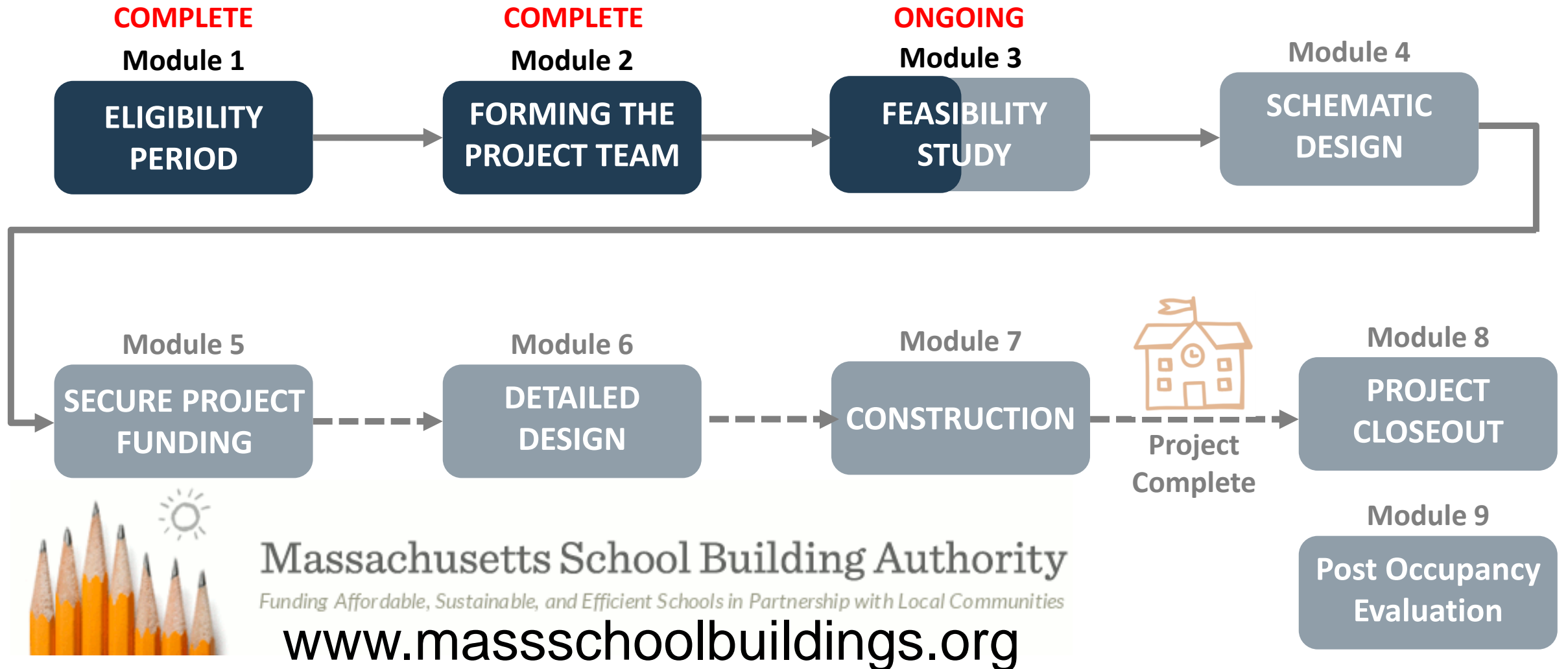
Judd Christopher
MCPPO, Project Manager



Sarah Carda
AIA, Project Architect

PROJECT TIMELINE

MSBA Process



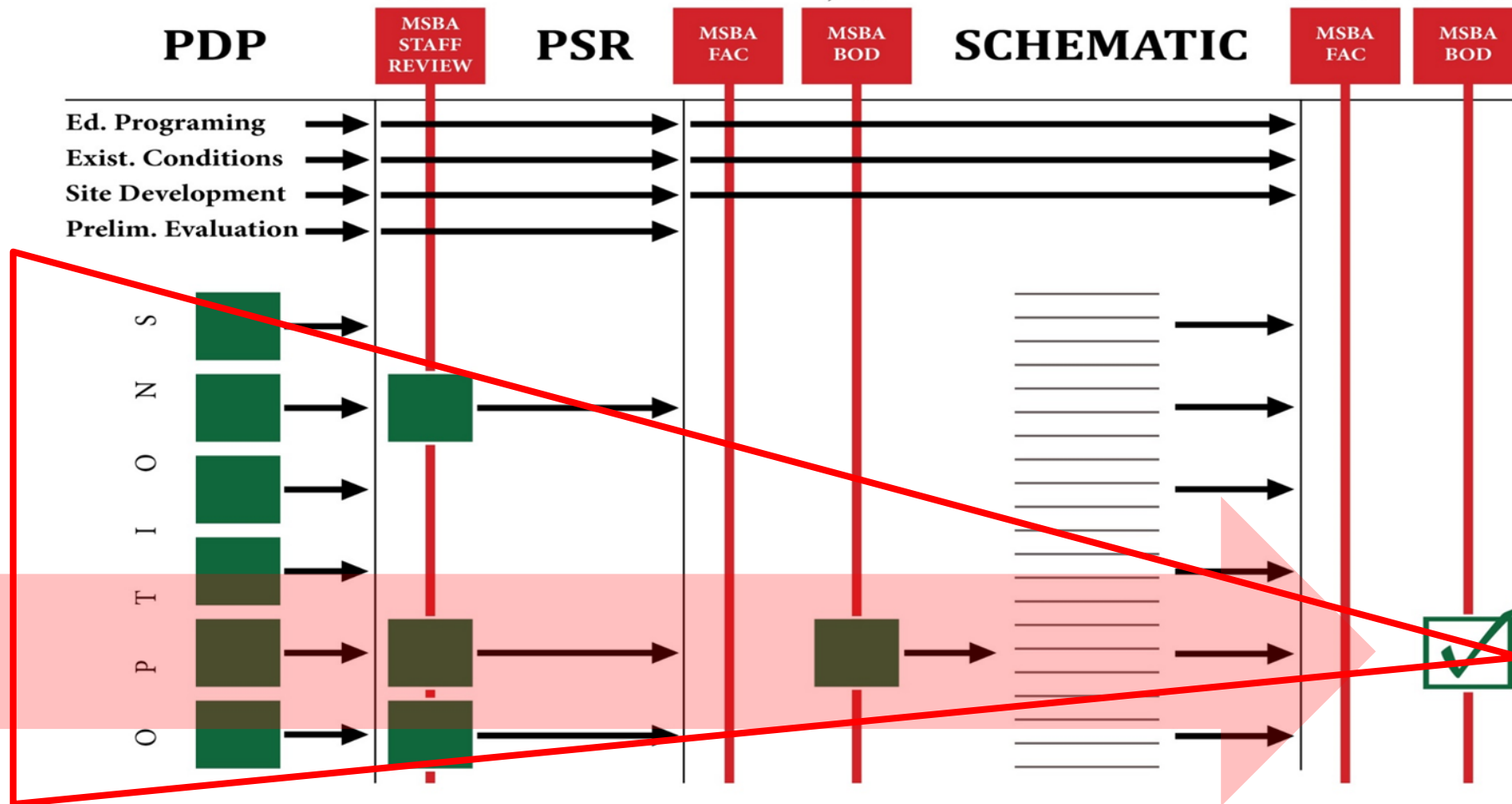
Massachusetts School Building Authority

Funding Affordable, Sustainable, and Efficient Schools in Partnership with Local Communities

www.massschoolbuildings.org

PROJECT TIMELINE

MSBA Process



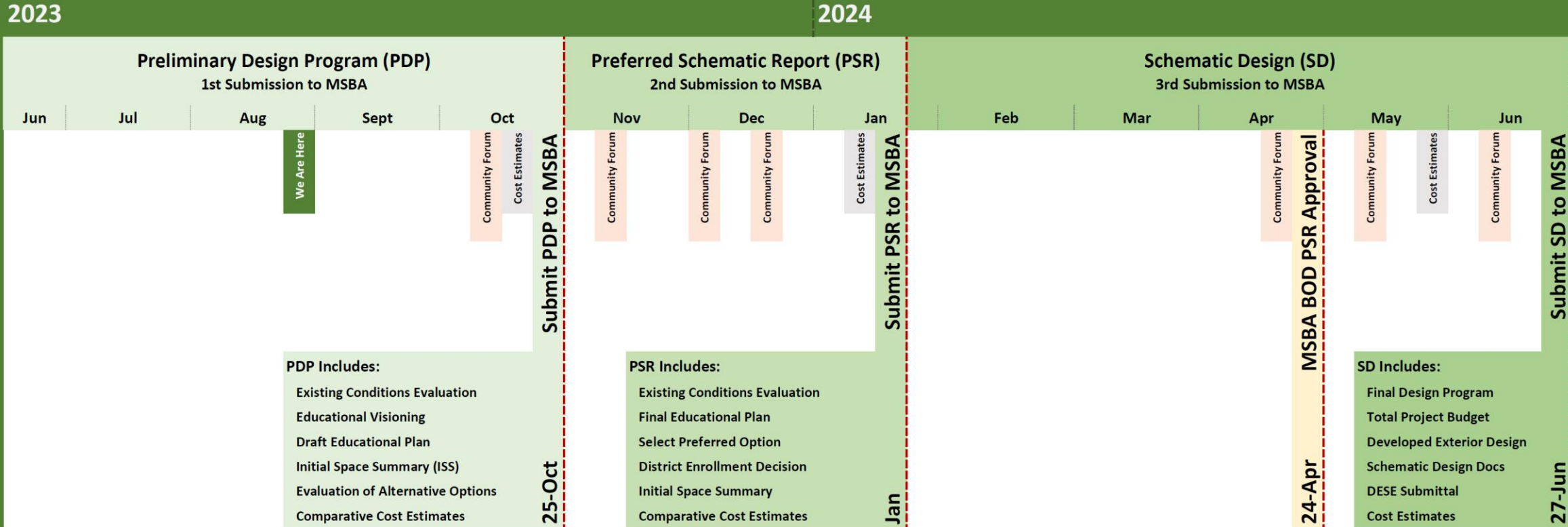
PDP = Preliminary Design Program
 PSR = Preferred Schematic Report



PROJECT TIMELINE

Milestones

Feasibility Study / Schematic Design Work Phase



Status Updates

MSBA Submission: **Preliminary Design Program**

- 1. Existing Conditions Assessment
- 2. Education Program
- 3. Site Development Requirements
- 4. Preliminary Options

Status Updates

1. Existing Conditions Assessment – *in process*

Components:

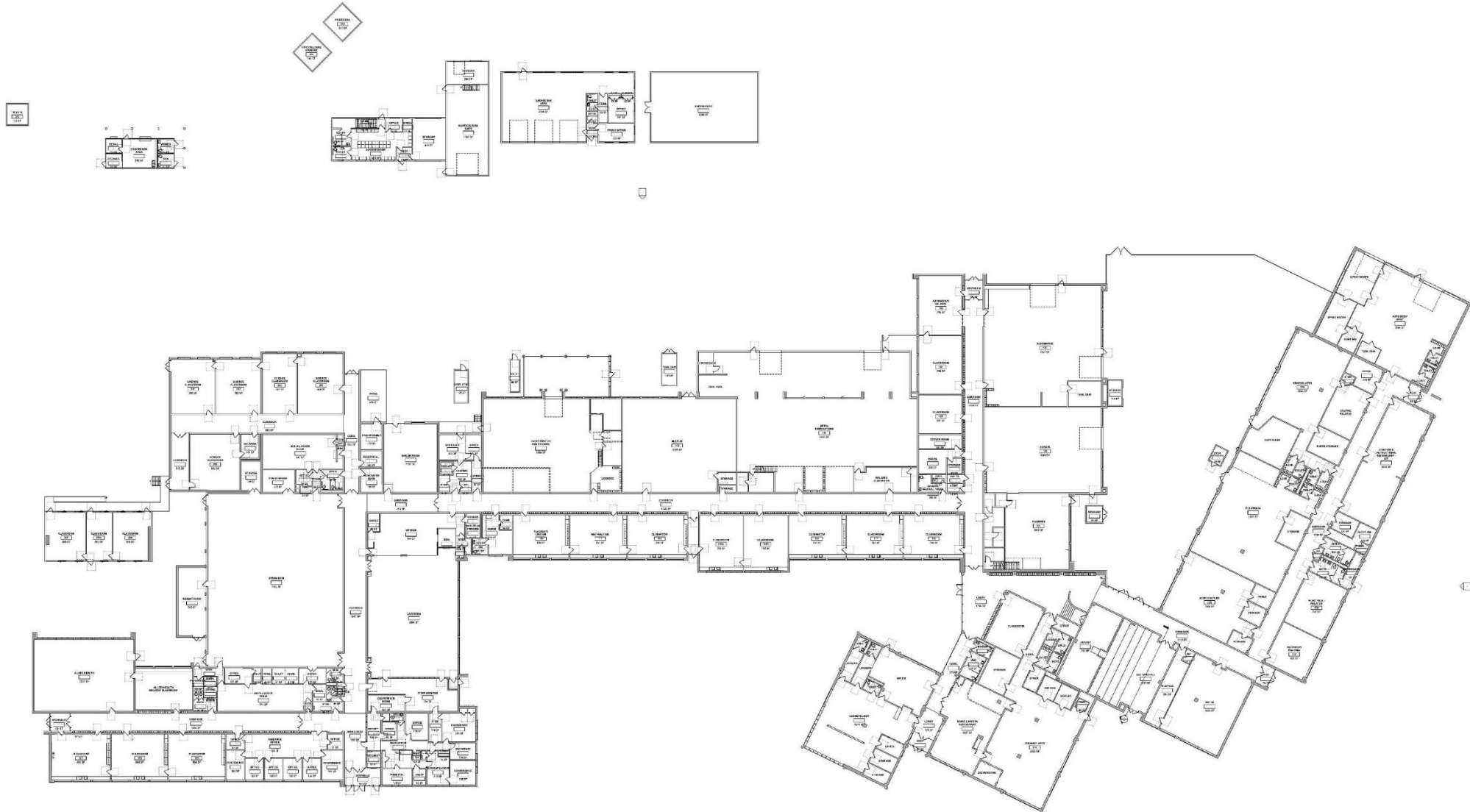
- Architectural
- Site - Geotech
- Structural
- Mechanical-Electrical-Plumbing
- Environmental, Hazardous Materials

Outcome:

- Report
- Base Repair



Existing Conditions



Space Analysis







Status Updates

2. Educational Programming

- Visioning – *complete*
- Educational Program – *in process*
- Space Summaries - *in process*

Visioning

Work Shop 1

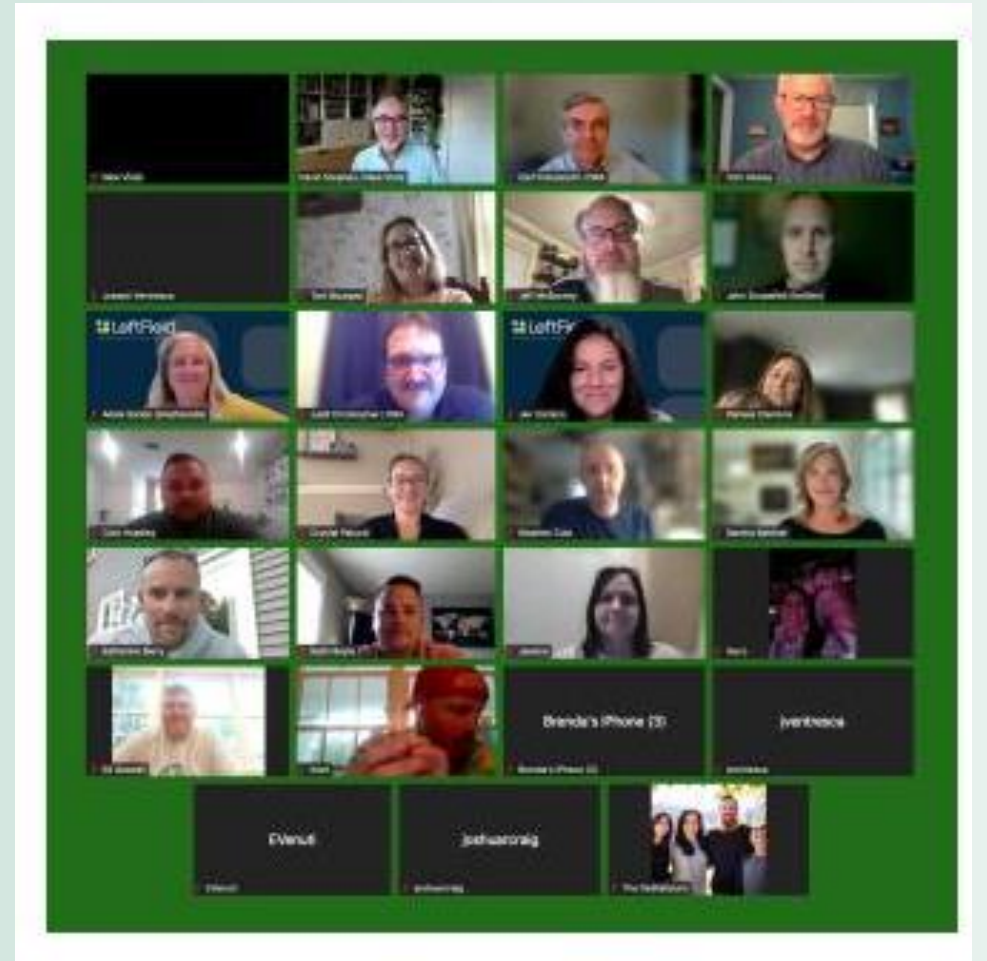
- Priority Goals
- Future-Ready Teaching and Learning Practices
- Future Ready Learning Goals

Work Shop 2

- Strengths, Challenges, Opportunities, and Goals
- Architectural Design Patterns
- Blue Sky Ideas

Work Shop 3

- Guiding Principles
- Bubble Diagramming
- Key Talking Points



Workshop 1

Hopes & Goals

- Updated and Larger Building
- Welcoming Design
- Community Access

Educational Priorities

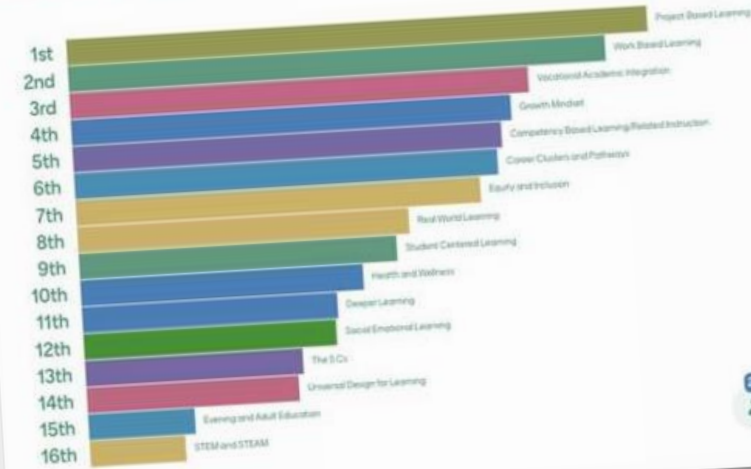
- Student-Centered Learning
- Expanded Adaptable Ch. 74 Programs
- Inclusive & Differentiated Learning

Architectural Priorities

- Flexibility
- Collaborative Spaces
- Natural light

1. Project-Based Learning
2. Work-Based learning
3. Vocational Academic Integration
4. Growth Mindset
5. Competency Based Learning
6. Career Clusters and Pathways
7. Equity and Inclusion
8. Real World Learning
9. Student-Centered Learning
10. Health and Wellness
11. Deeper Learning
12. Social Emotional Learning
13. The 5 Cs
14. Universal Design for Learning
15. Evening and Adult Education
16. STEAM and STEAM

Which elements of teaching and learning are most important to you within SST?



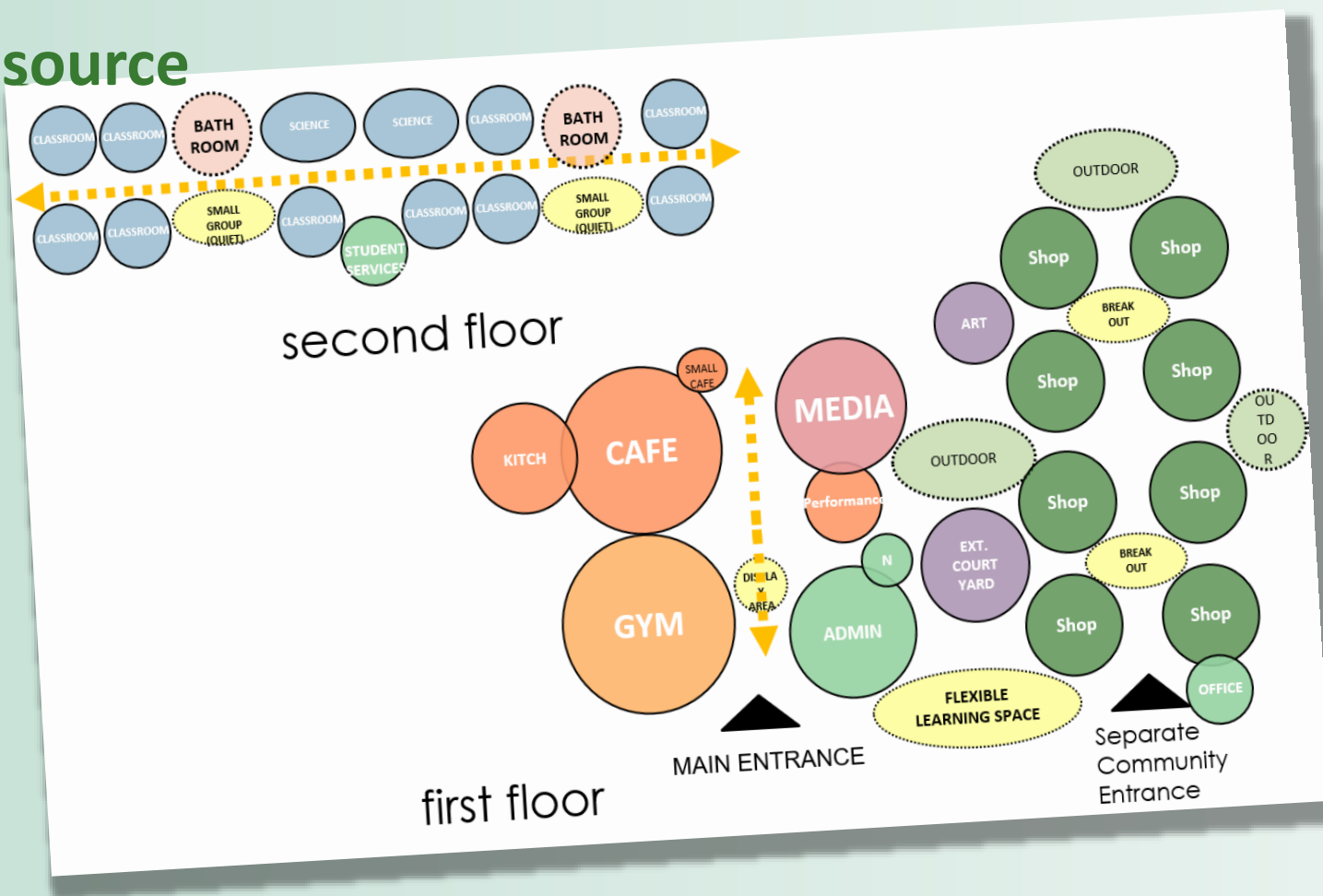
Workshop 3

Guiding Principles

- **School as Community Resource**
- **Natural Light**
- **Flexible to Adapt to 21st C Skills**
- **Heart of School / Commons**

Bubble Diagrams

- **Adjacencies**
- **Connections**
- **Flow**



Educational Program



Key issues

- Current vs. Proposed Teaching & Learning
- Ch. 74 Programs - Existing & Proposed
- Target Enrollment(s)
- Collaborative Effort

ADD NAME, LOGO, DATE, AND "EDUCATIONAL PROGRAM"

Educational Program

South Shore Regional Vocational Technical High School

Thomas J. Hickey
Superintendent-Director
September 2023

Space Summaries



Quantitative Program Summary

- 645 Students = 203,500 GSF (CTE: 64,500 sf)
- 750 Students = 228,500 GSF (CTE: 74,200 sf)
- 805 Students = 240,000 GSF (CTE:79,000 sf)
- 900 Students = 260,000 GSF (CTE:88,000 sf)
- 975 Students = 277,000 GSF (CTE:95,000 sf)

The image shows a detailed spreadsheet titled "Proposed Space Summary - Regional Vocational Technical High School". The spreadsheet is organized into several columns and rows, detailing the space requirements for various programs. Key sections include:

- EXISTING CONDITIONS:** Lists existing rooms and their areas.
- PROPOSED CONSTRUCTION:** Lists new rooms to be constructed, categorized by program (e.g., CTE, General Education).
- TOTAL:** Summarizes the total space requirements for each program and overall.
- REMARKS:** Provides additional notes and comments for specific rooms or programs.

The spreadsheet uses color-coding (yellow and blue) to highlight different sections and data points. It includes a header with the school name and a footer with the date and version number.

Status Updates

3. Site Development Requirements

Key issues

- Vehicular Circulation, Bus & Car Access
- Parking requirements
- Athletic Fields & support spaces
- Outdoor Learning opportunities
- Utilities
- Outbuildings
- Adjacent Property







Status Updates



4. Preliminary Options

- Base Repair
- Renovation
- Addition/ Renovation
- New Construction



areas of potential addition

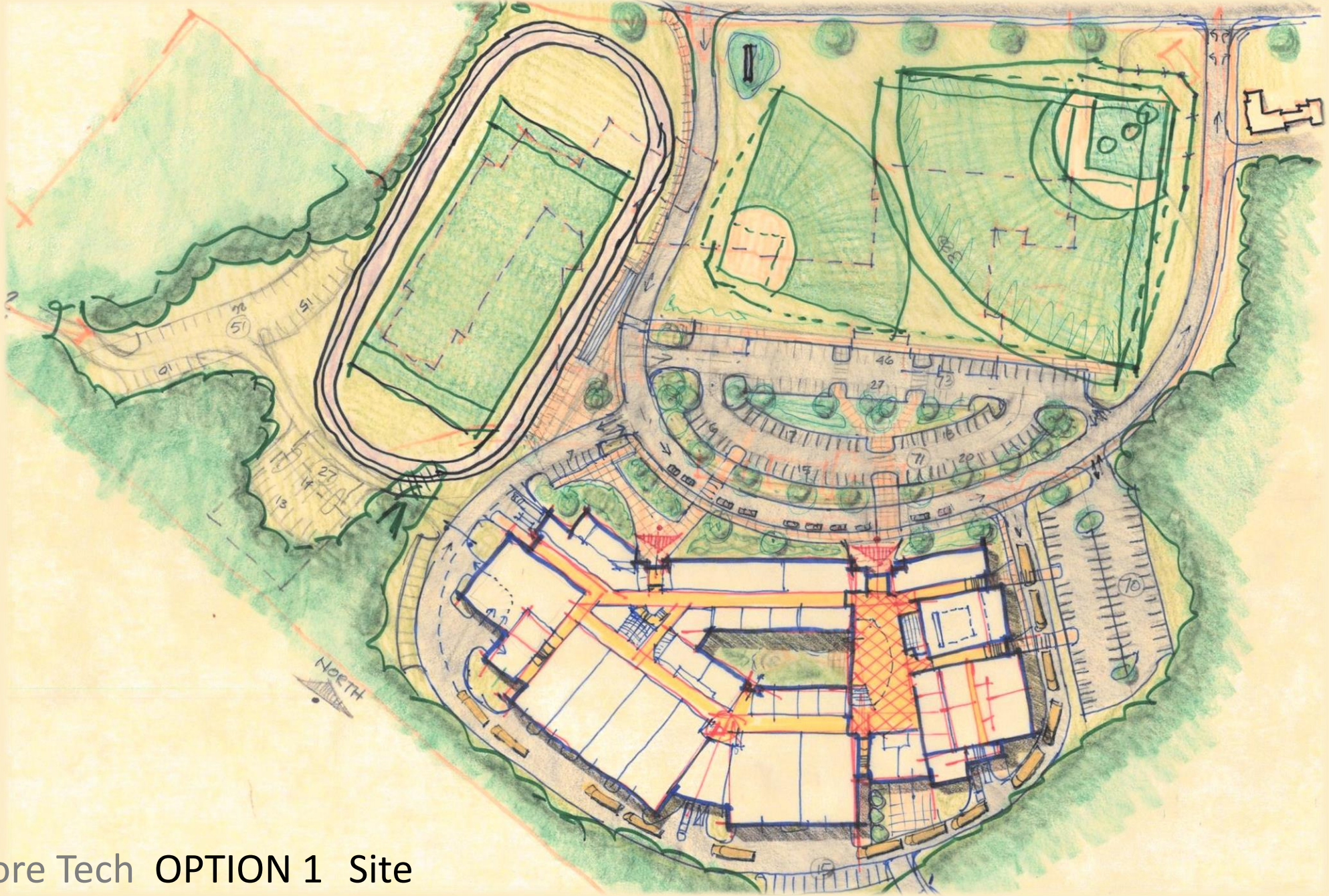
area of potential new construction

Preliminary Options

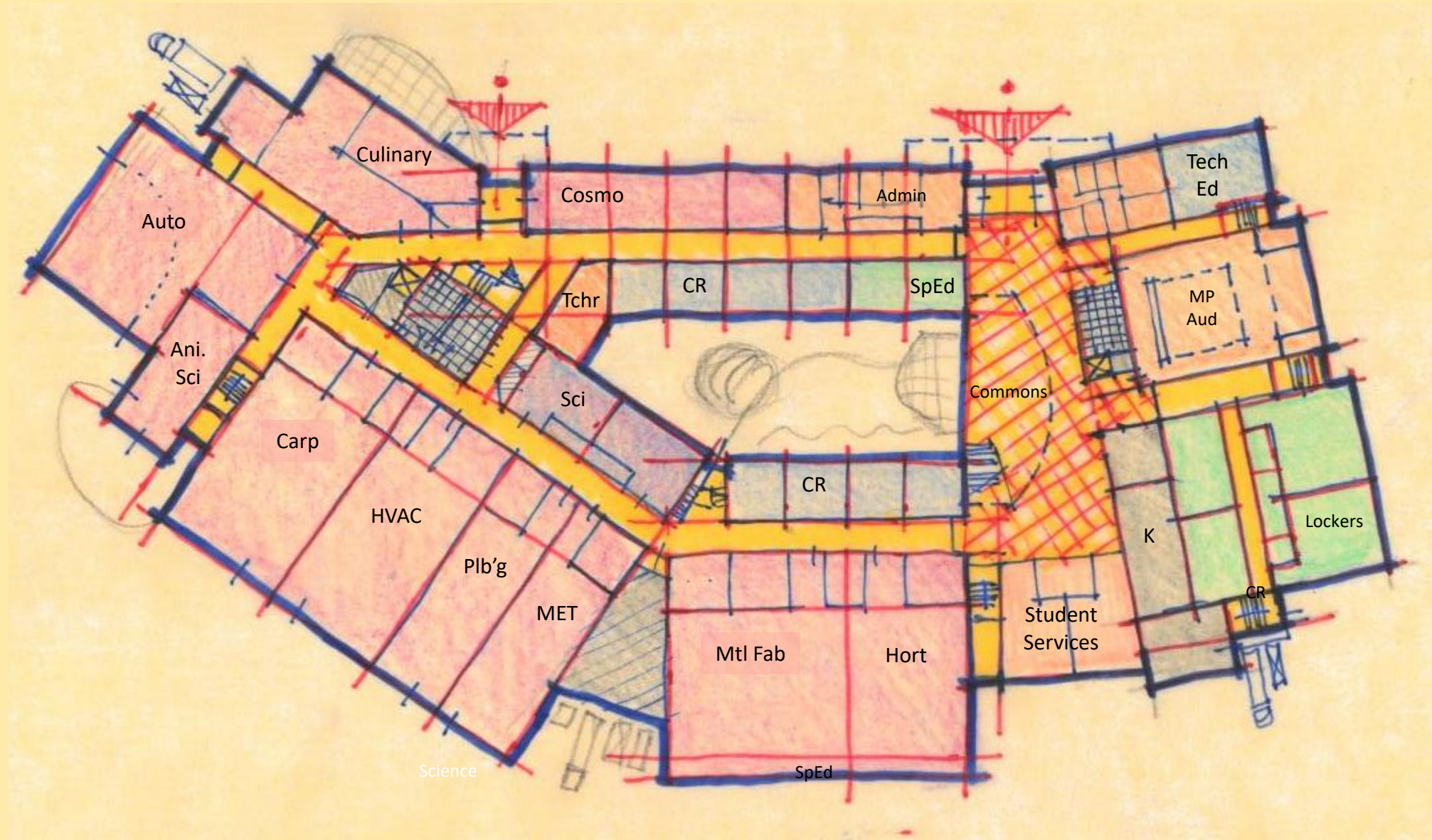


New Construction Options

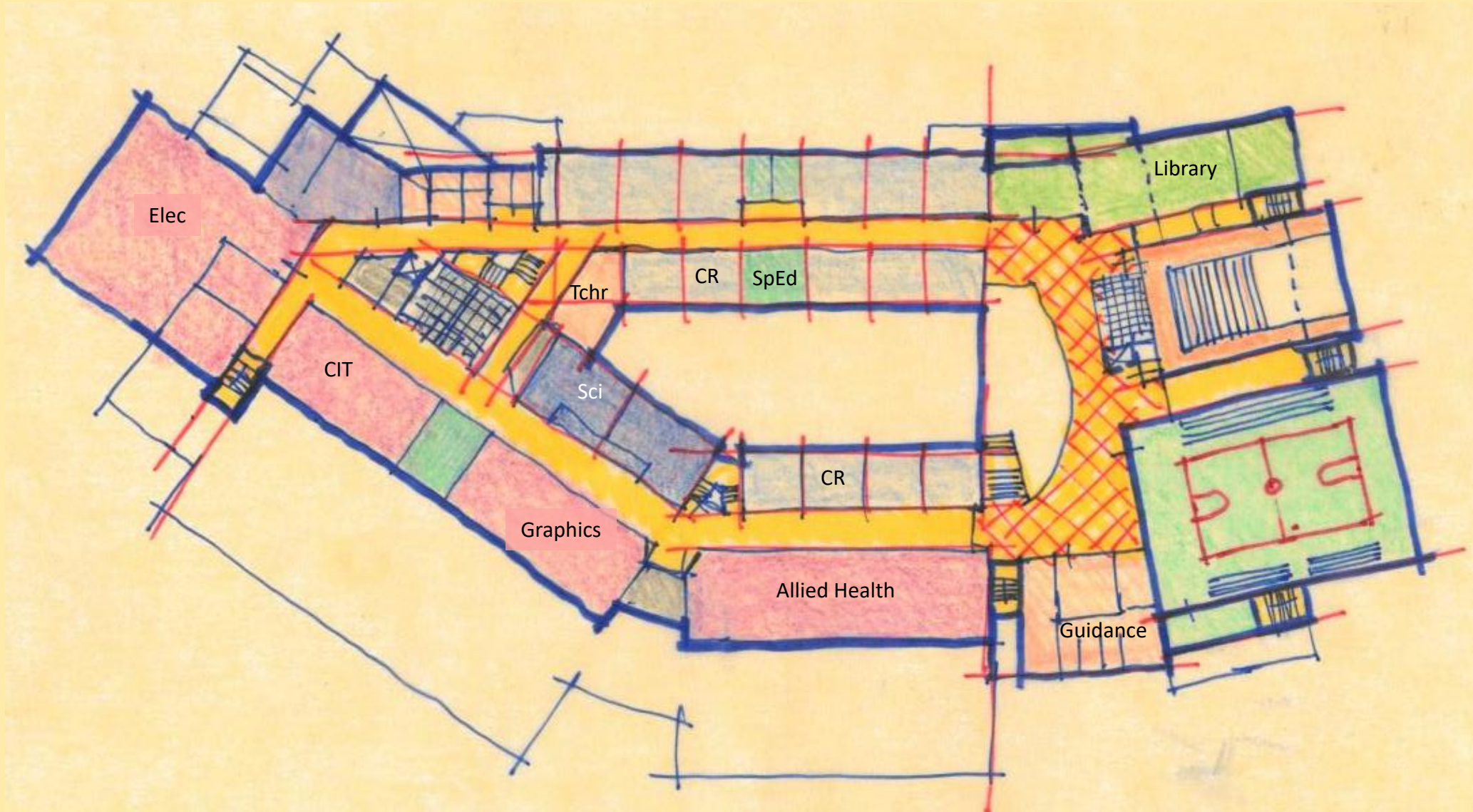
1. Courtyard
2. Linear
3. Wings



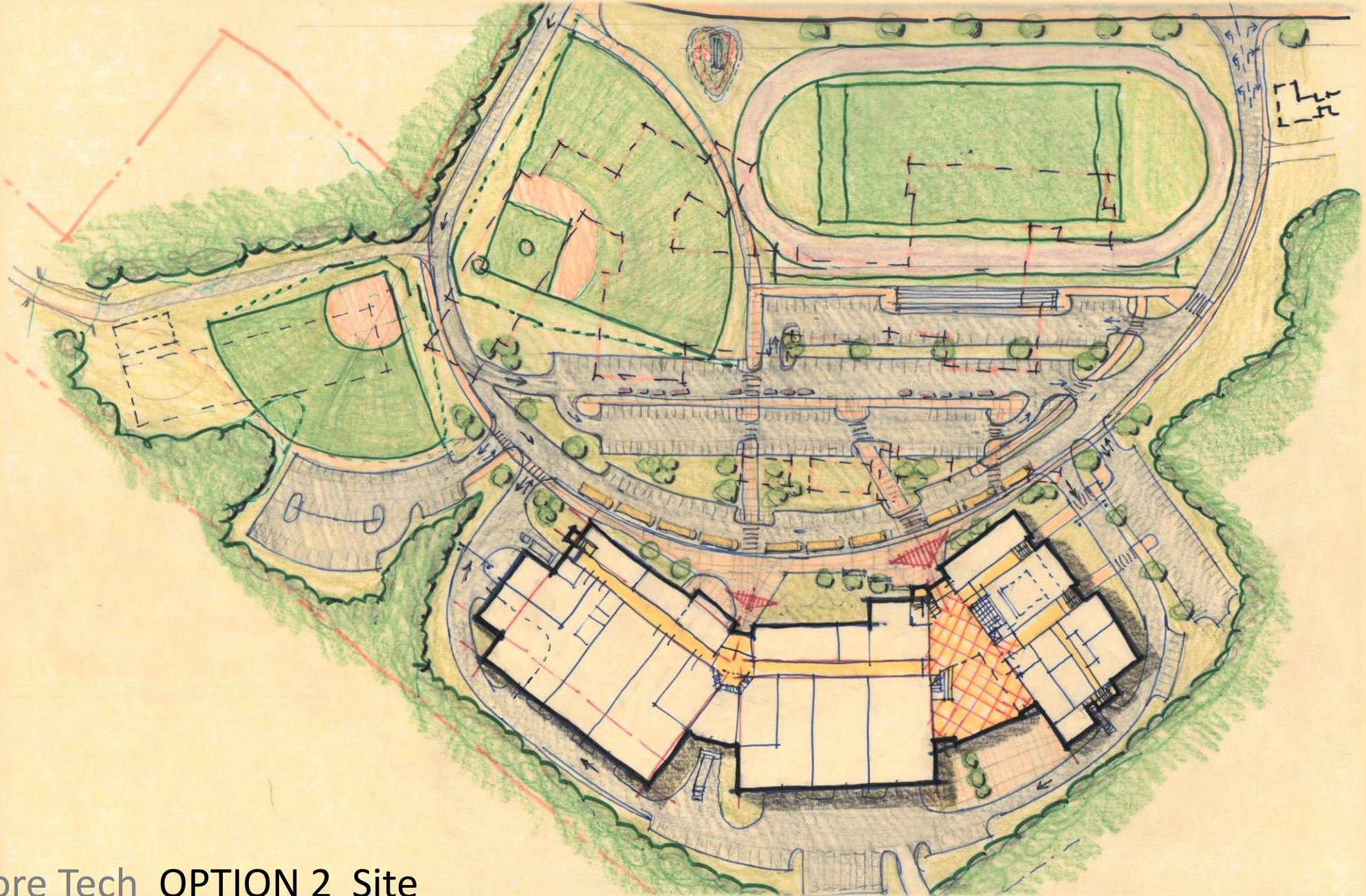
South Shore Tech OPTION 1 Site



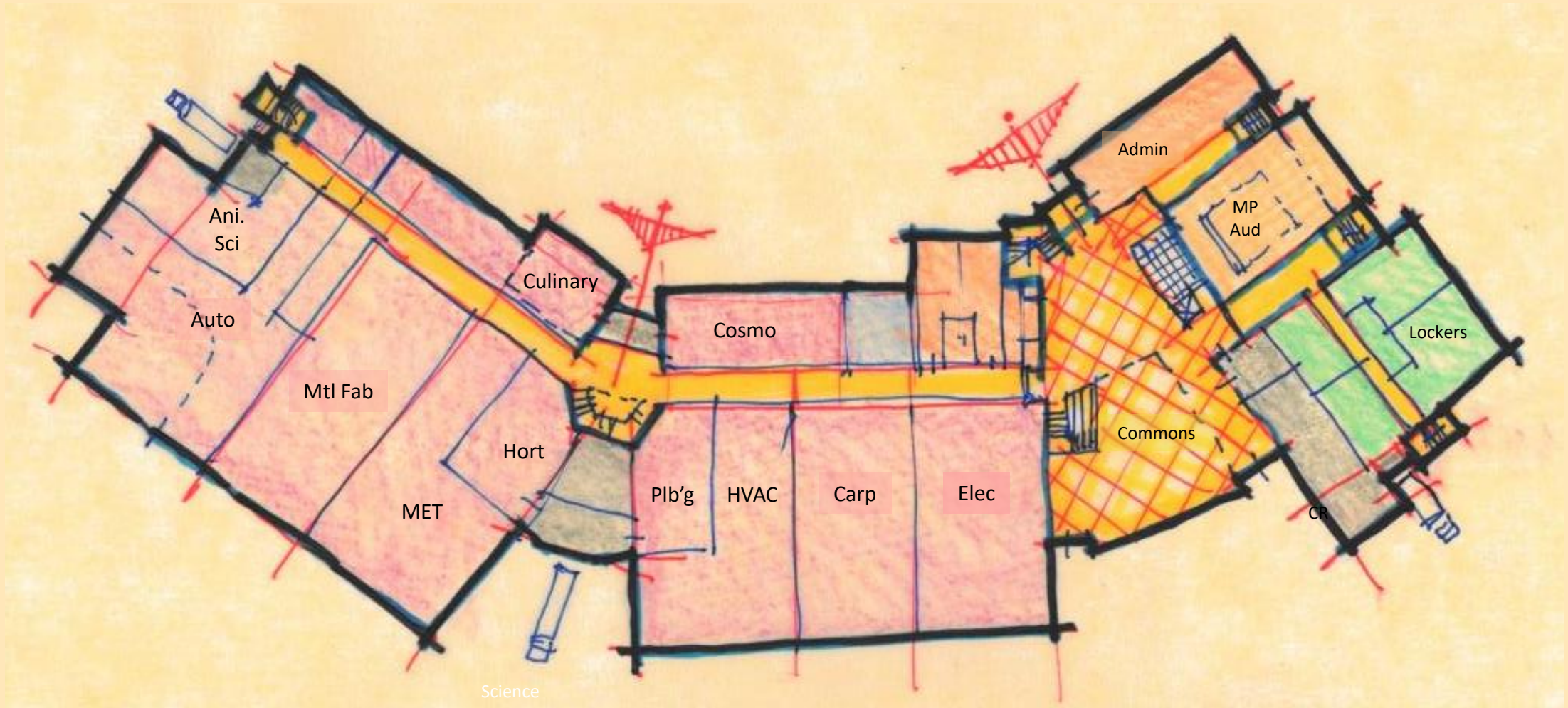
South Shore Tech OPTION 1 1st Floor



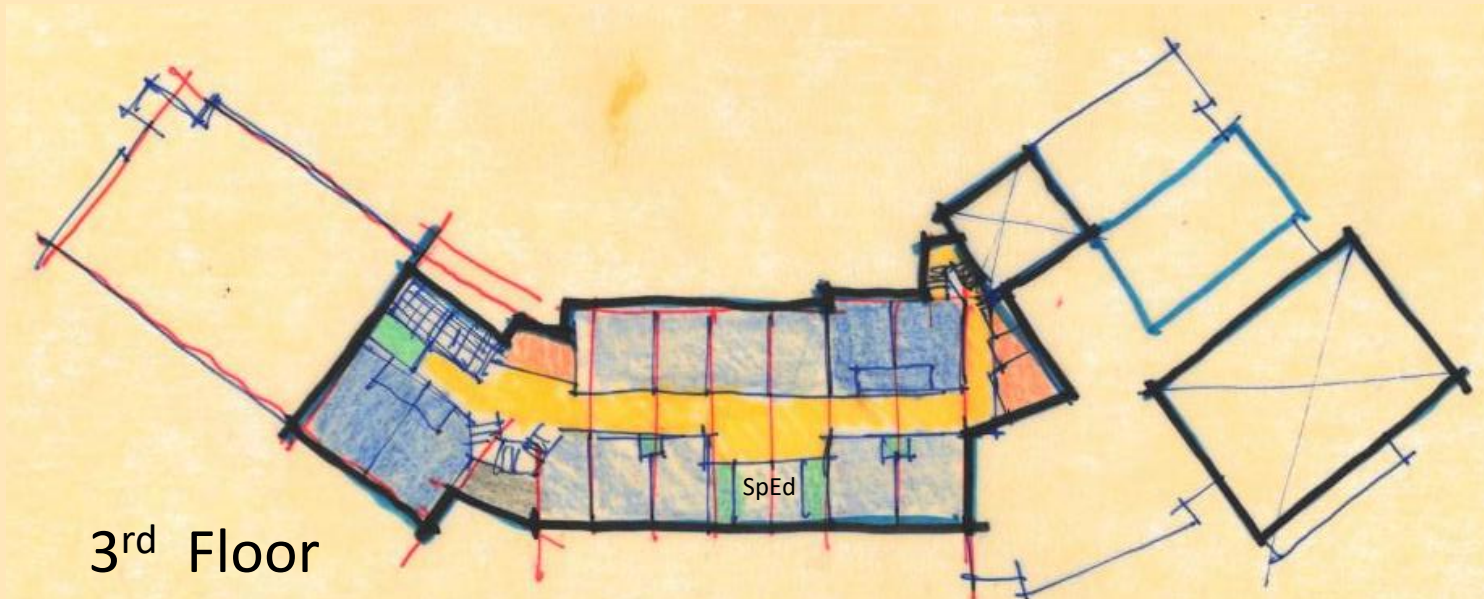
South Shore Tech OPTION 1 2nd Floor



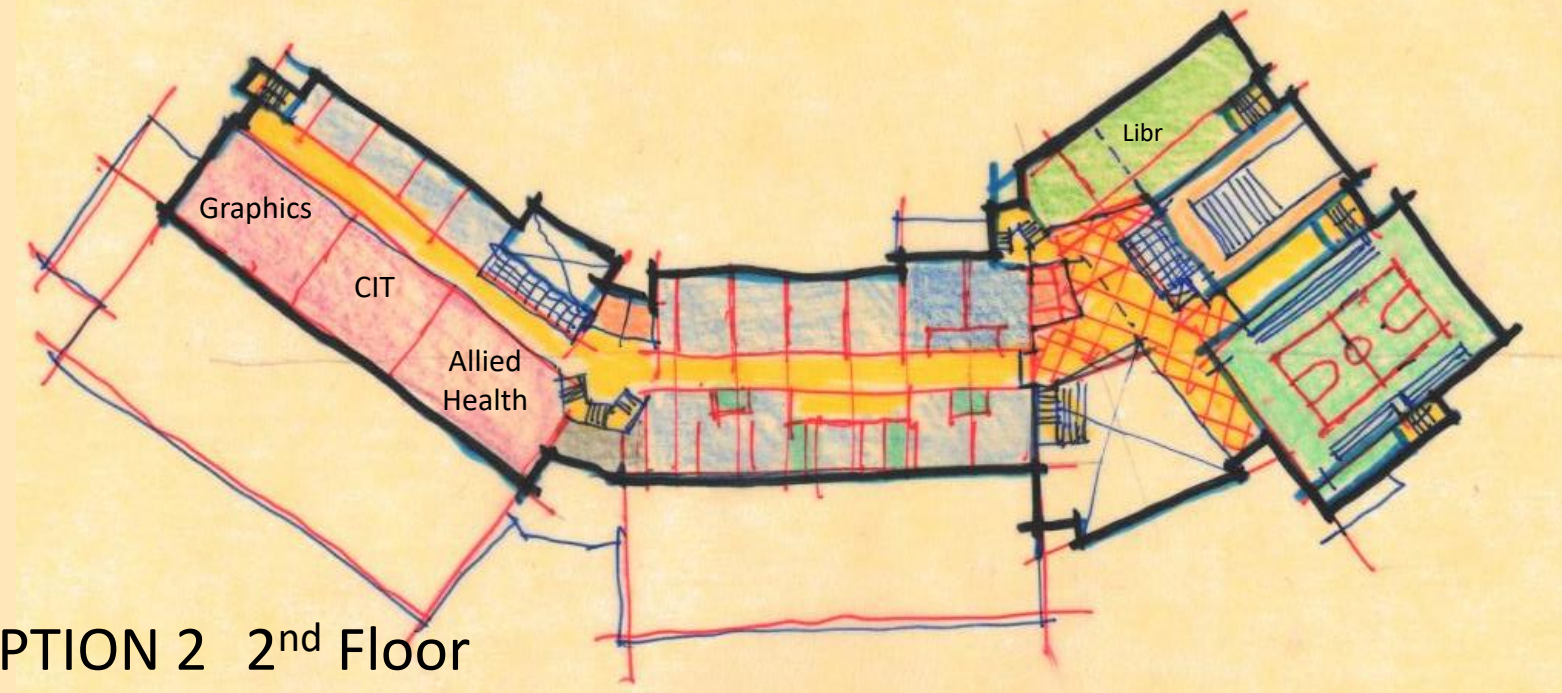
South Shore Tech OPTION 2 Site



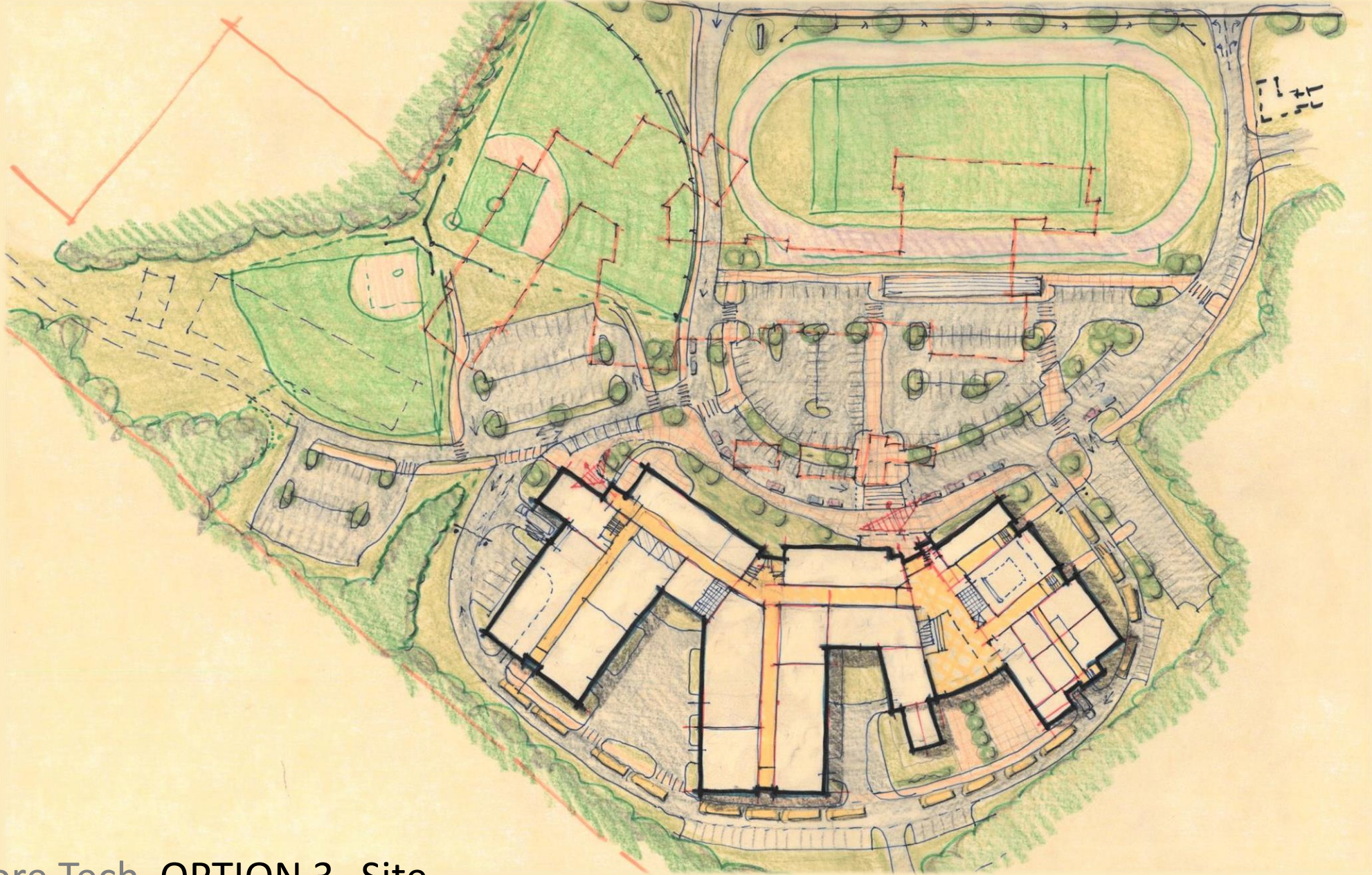
South Shore Tech OPTION 2 1st Floor



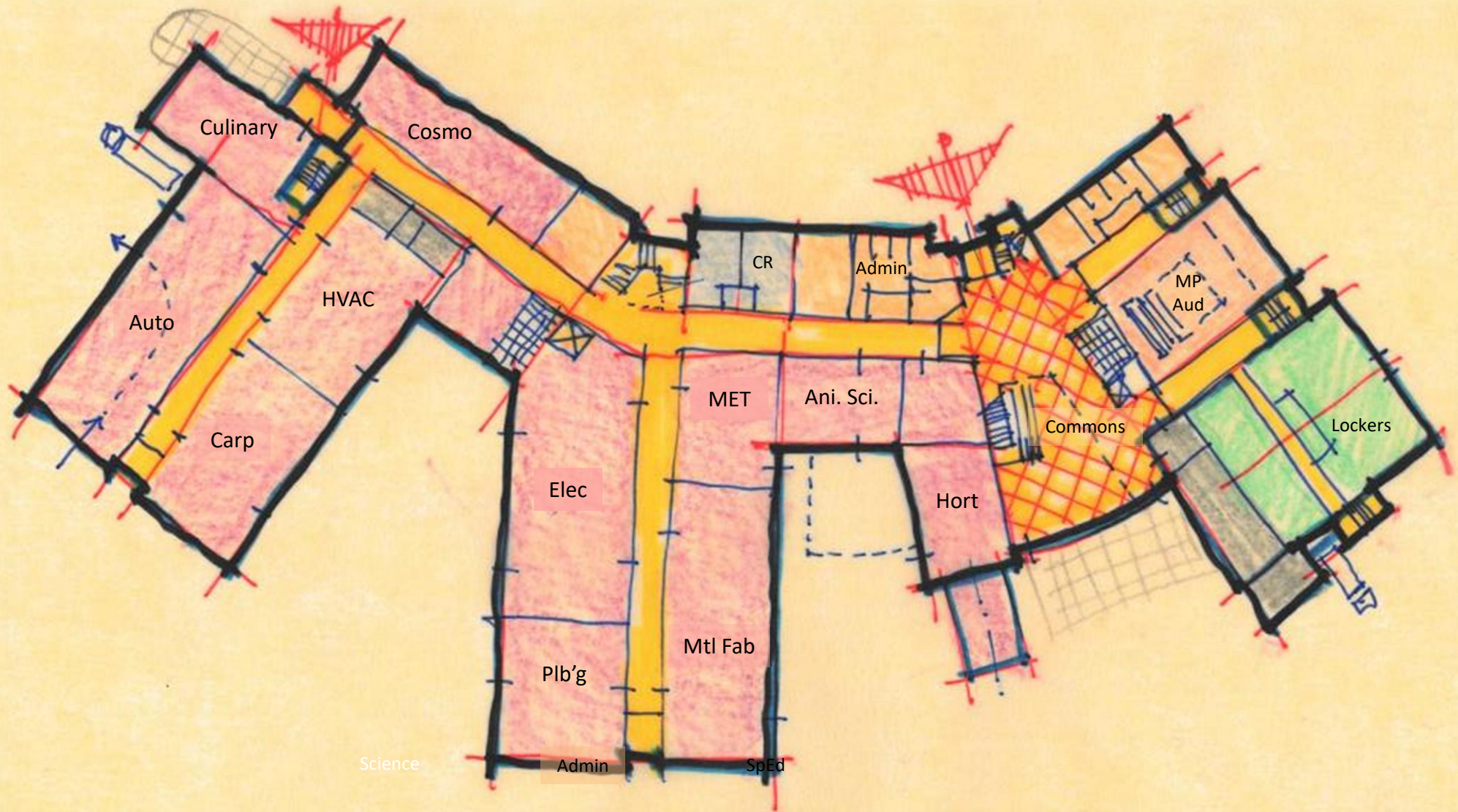
3rd Floor



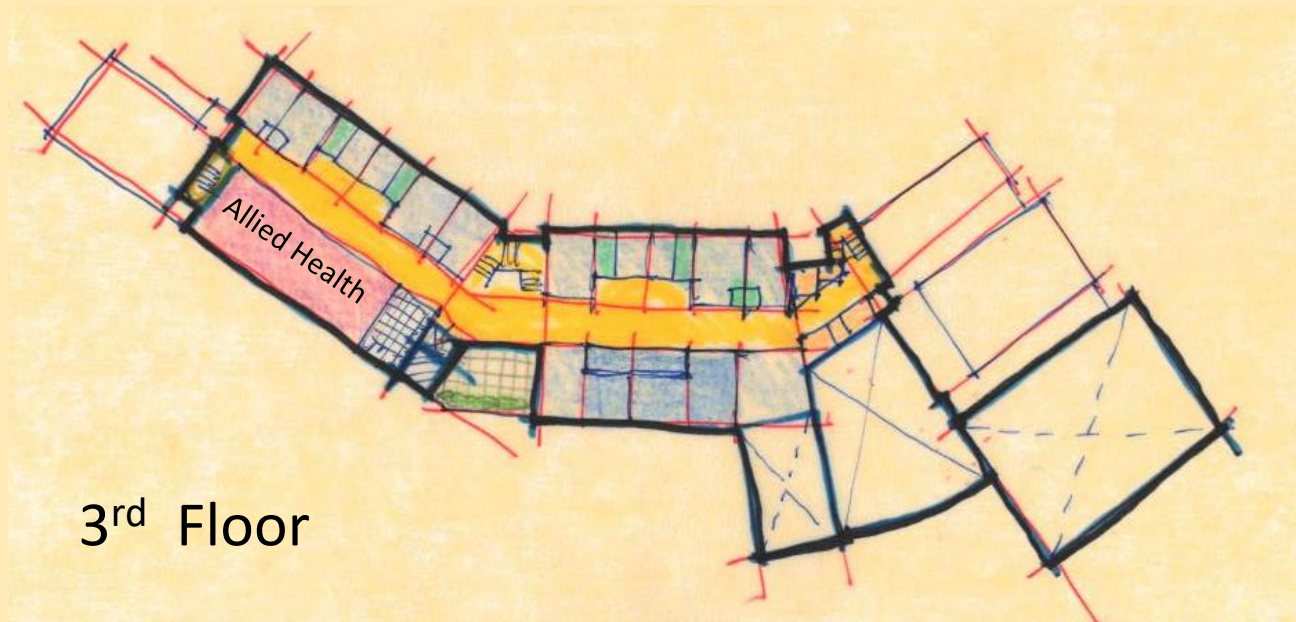
South Shore Tech OPTION 2 2nd Floor



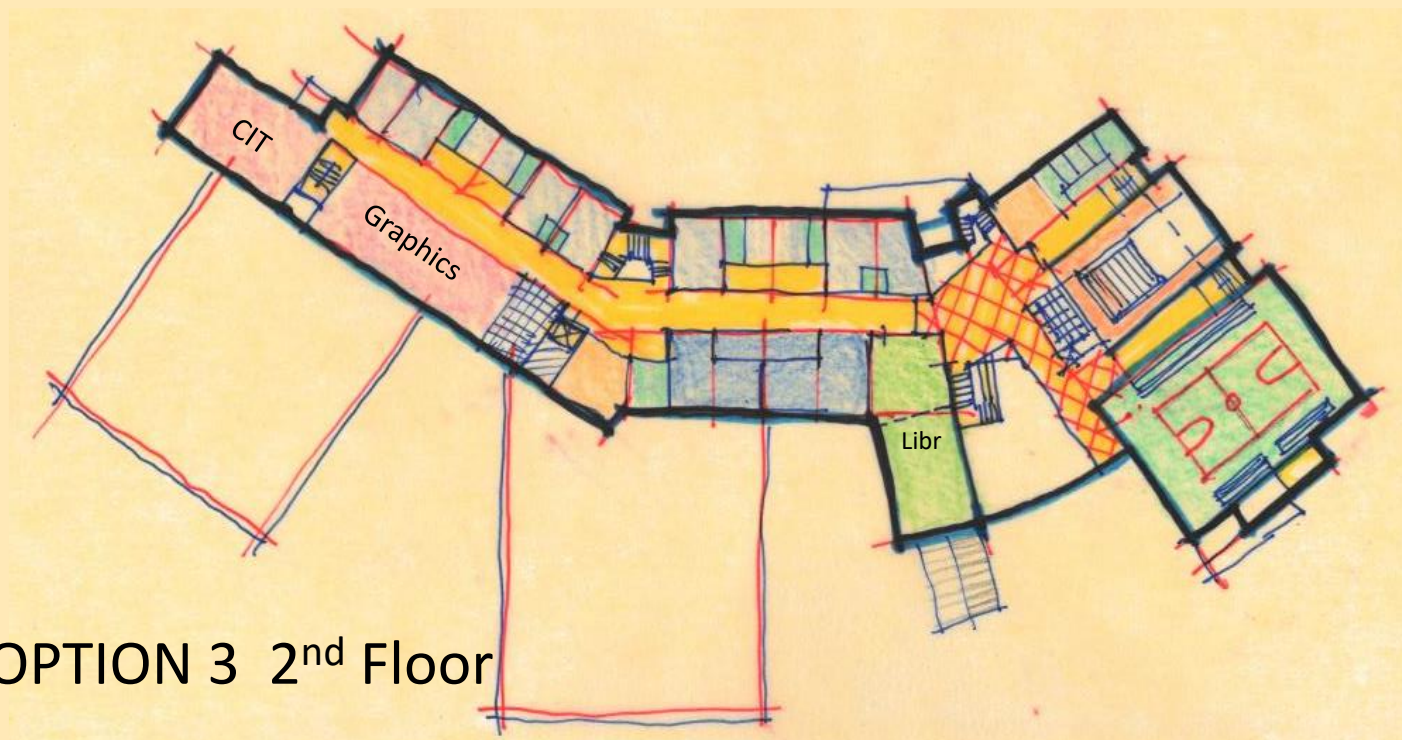
South Shore Tech OPTION 3 Site



South Shore Tech OPTION 3 1st Floor



3rd Floor



South Shore Tech OPTION 3 2nd Floor

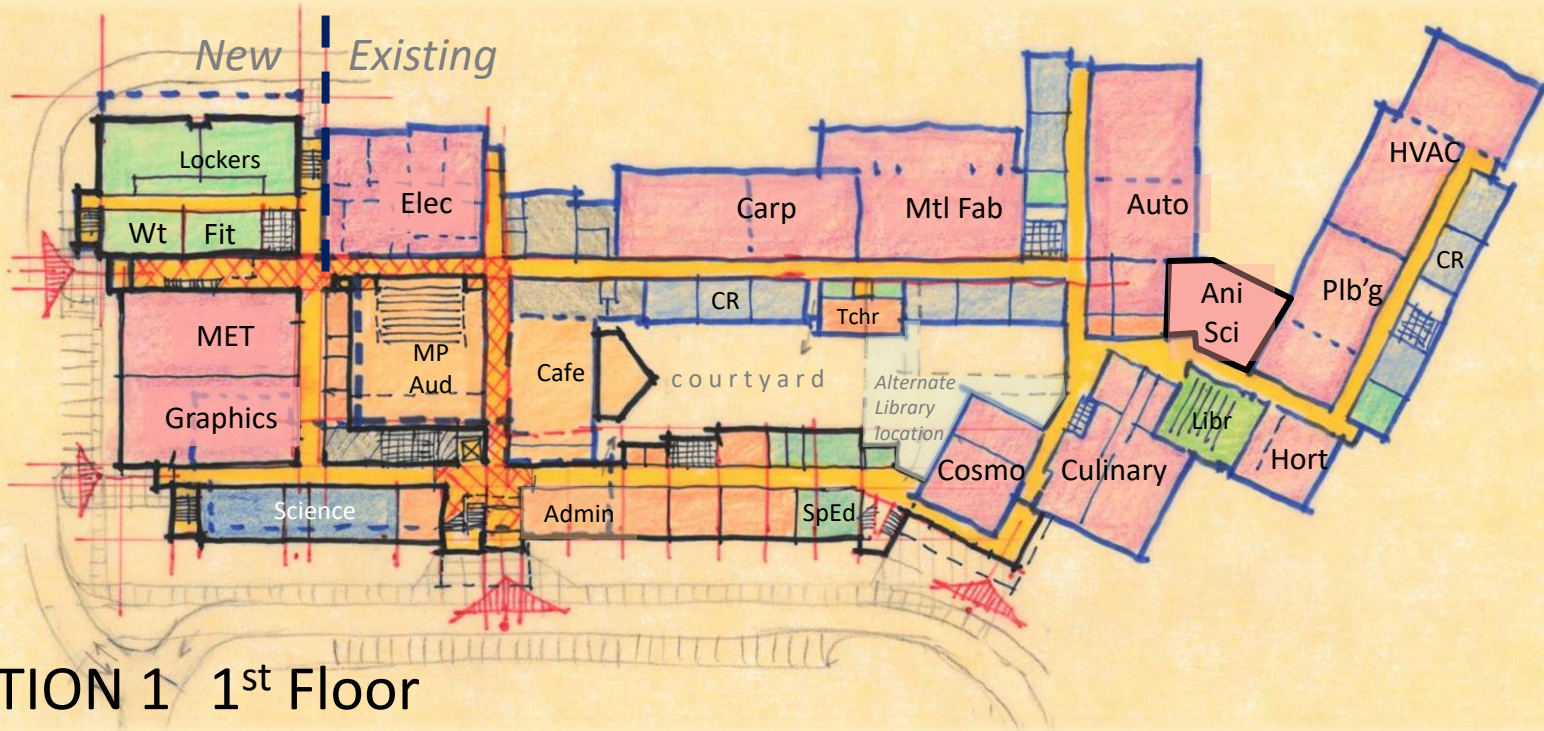
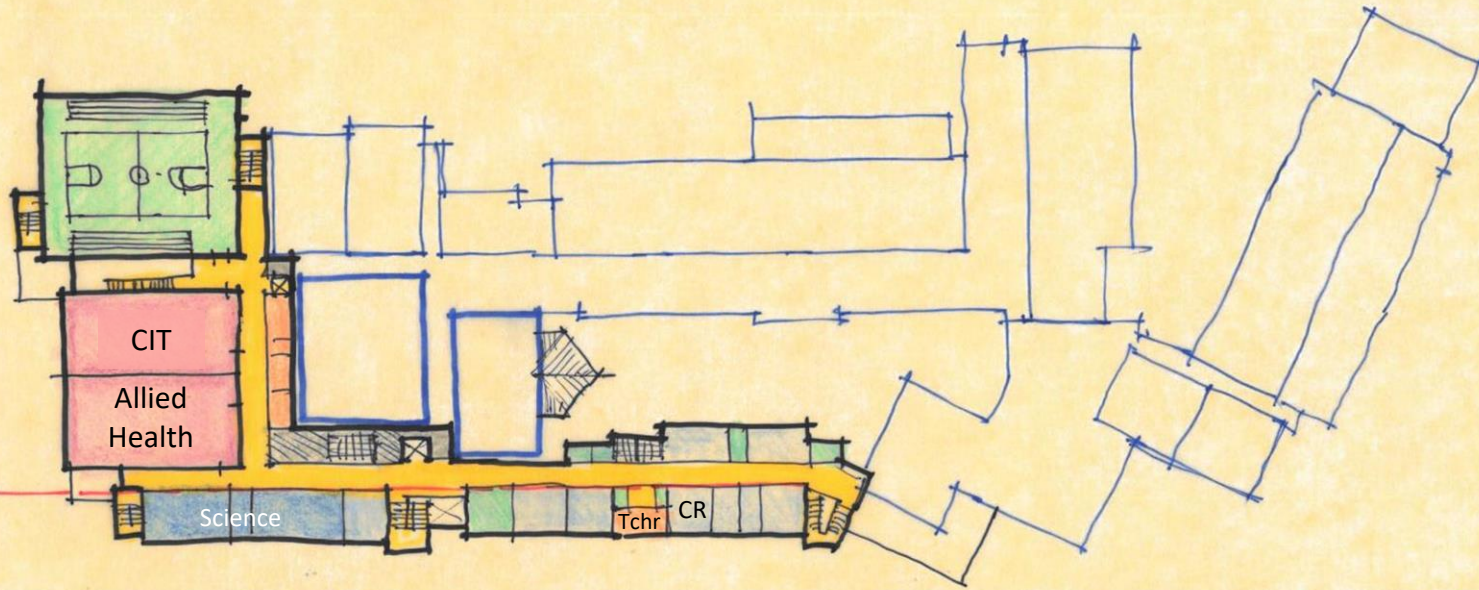
Preliminary Options



Addition / Renovation Options

1. L-Shaped
2. Courtyard

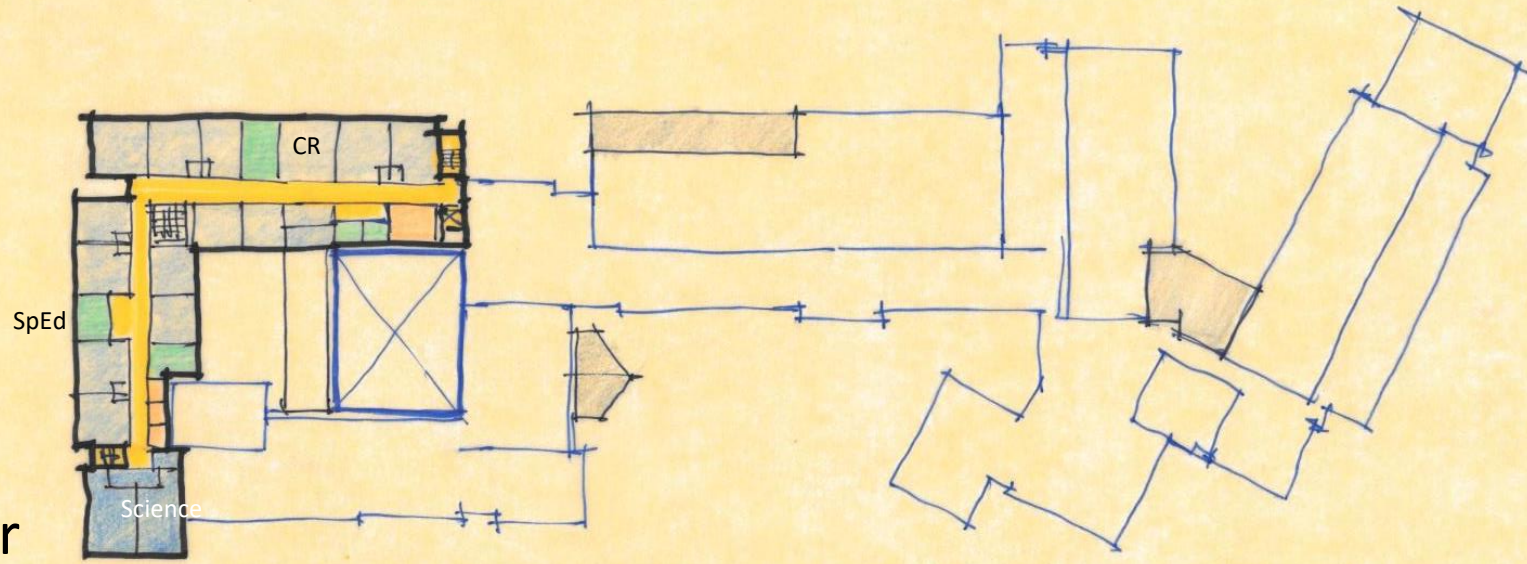
2nd Floor



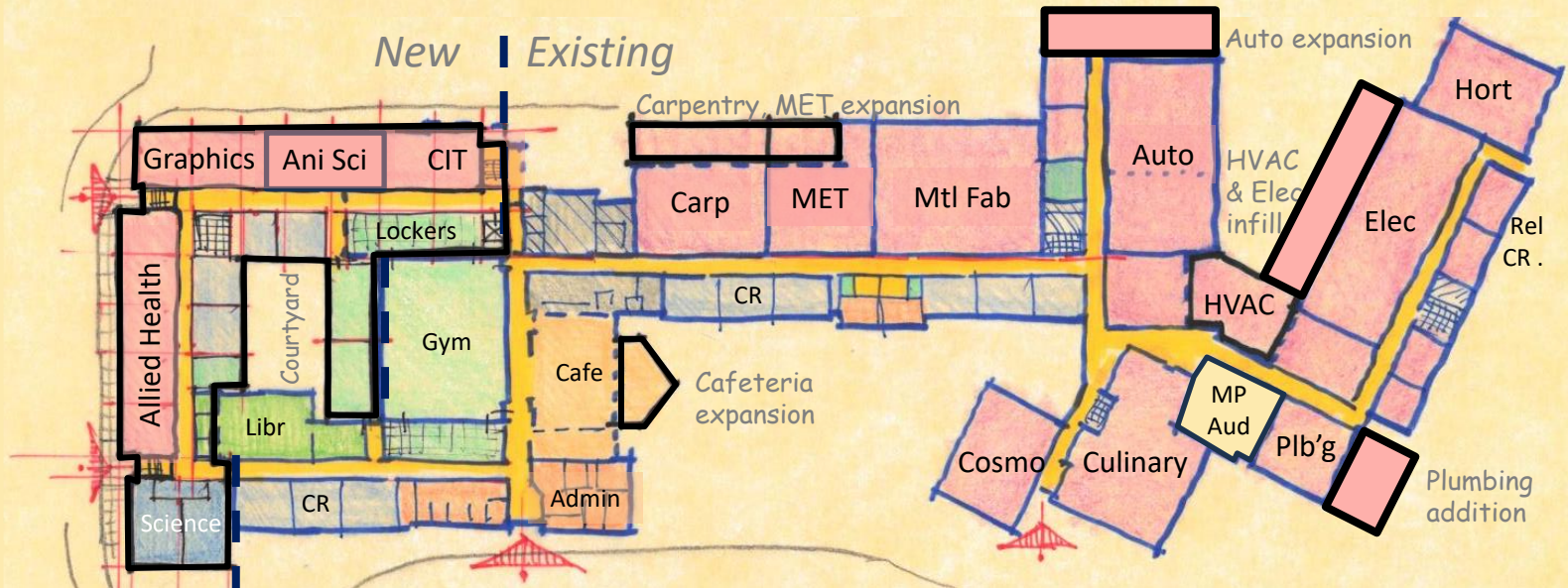
South Shore Tech OPTION 1 1st Floor



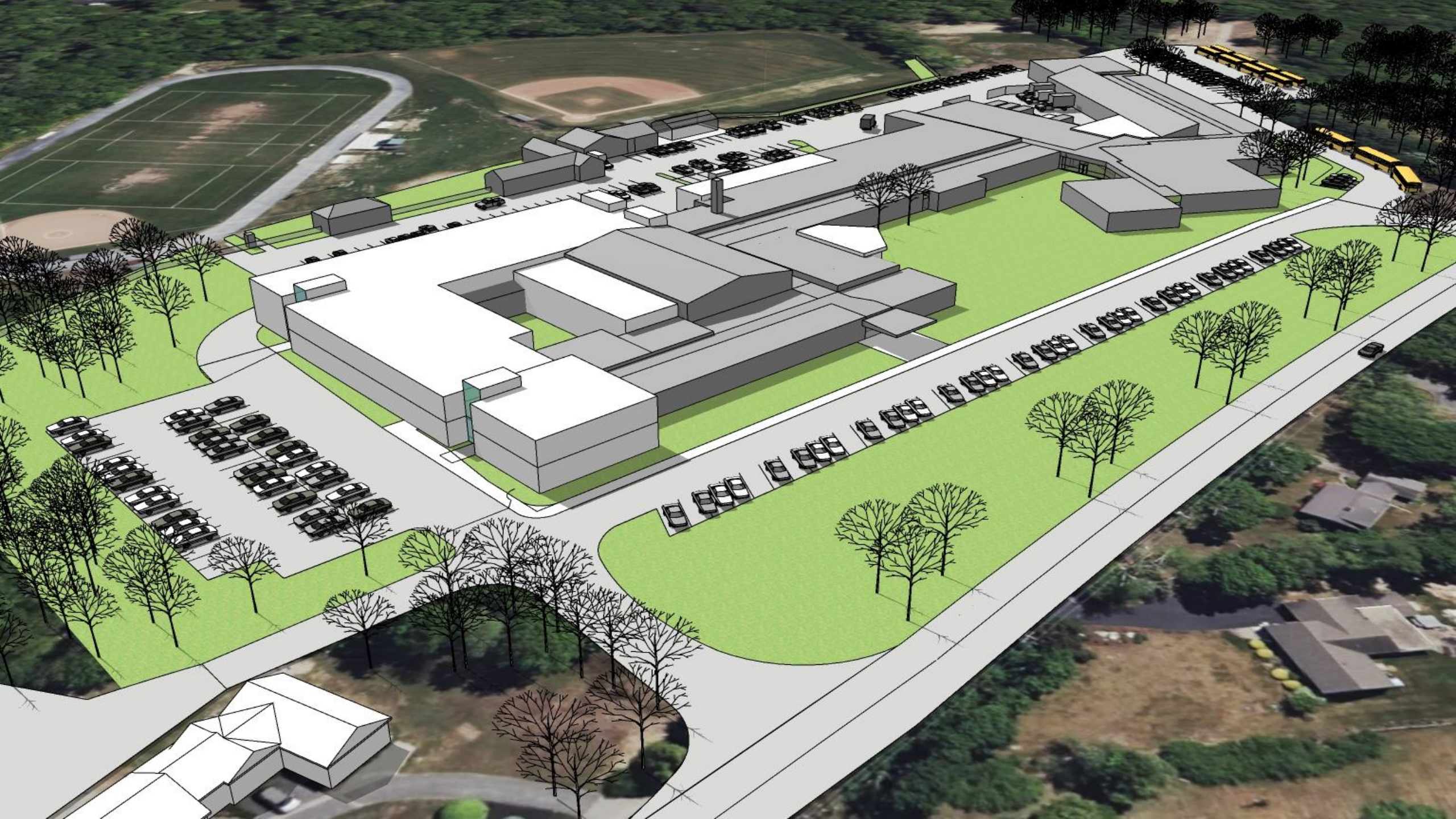
2nd Floor



New | Existing



1st Floor





Upcoming Community Forums

- Thursday, November 9
@ Marshfield Town Hall
- December TBD
@ Rockland Senior Center
- Thursday December 14
@ Whitman Town Hall

Building Committee Meetings

- Thursday November 2
- Thursday December 7
- Thursday January 4



Questions?

Check out our website for updates!

<https://southshorettechproject.com/>